

# The Long Paddock Touring Route

## Cobb Highway NSW

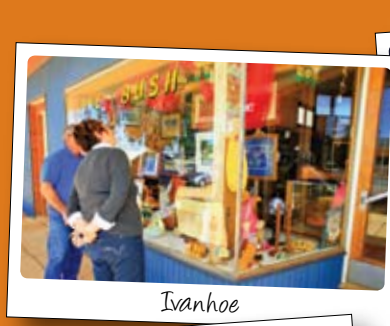
---

Encompassing The Murray, Deniliquin, Conargo,  
Hay and Central Darling Regions



**TheLongPaddock**  
Cobb Highway Touring Route

[www.thelongpaddock.com.au](http://www.thelongpaddock.com.au)



Ivanhoe



Wilcannia



Booligal



Hay



Booroorban



Wanganella



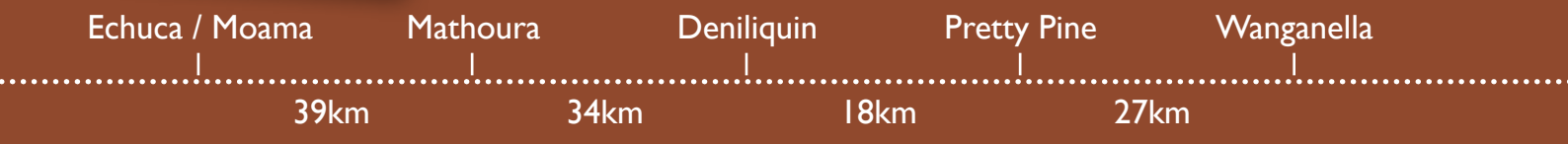
Deniliquin



Echuca / Moama



Mathoura





## Welcome

Welcome to The Long Paddock - Cobb Highway Touring Route which follows The Cobb Highway (named for the famous coach company) from Echuca Moama on the Victorian border, through to Wilcannia leading to the iconic outback towns of Bourke, Broken Hill and White Cliffs.

This visitors' guide contains information on each of the major towns and villages through which the touring route passes. It is divided into colour coded sections so you can easily find each region on the route, historical information on the towns and villages, accommodation options, attractions and places to eat and drink. As you travel along the touring route look for The Long Paddock Visitors Site road signs - these indicate the location of the 47 Long Paddock interpretive panels located along the route and within the towns. They tell the history of the region in words and images and are a great way to get to know the area. They also indicate the location of the seven famous ARTback sculptures - take a moment to stop and grab a photo with these stunning artworks. Each region is home to one of the five major rivers in central NSW - The Darling, Lachlan, Murrumbidgee, Edward and Murray. The rivers provide a great place to stop and rest and throw a line in or for the more adventurous, have a water ski or canoe trip.

If you really want to get a feel for the area pick up The Long Paddock audio tour CD (available for purchase at the Mathoura, Deniliquin and Hay Visitor Information Centres). The tour will guide you across the route at your own pace and let you in on some local knowledge and a few tall tales.

We hope you enjoy your stay while you *drive the drovers dream!*

Photography credits:

Don Fuchs, Mike Newling, Tourism NSW, Margie McClelland, Sandra Ireson, Leanne Whitely and Rhonda Nevinson



## Contents

History .....	4
Sculptures .....	5
Itineraries .....	6
Murray Region (Moama, Mathoura, Bunnaloo, Womboota & Caldwell) .....	8
Deniliquin Region .....	16
Conargo Region (Pretty Pine, Wanganella, Boorooban, Conargo, Blighty & Mayrung) .....	22
Hay Region (Hay, One Tree, Booligal, Maude & Oxley) .....	26
Central Darling Region (Ivanhoe, Wilcannia, Menindee, White Cliffs, Mossgiel and Tilpa) .....	34
Distance Grid .....	39

The Long Paddock would like to acknowledge all of the traditional land owners, some of whom played an important role in the development of the stock route.

*We want to say thanks for coming!*

When you visit The Long Paddock you help to keep our towns and villages thriving. Call into the Mathoura, Deniliquin or Hay Visitor Information Centres to receive your free Long Paddock sticker as a token of our appreciation.

Boorooban

Hay

Booligal

Ivanhoe

Wilcannia

36km

49km

72km

131km

182km

# The Long Paddock

The modern Cobb Highway follows part of the great network of stock routes that became known as "The Long Paddock" - a historic web of tracks and trails linking stock-breeding areas of inland NSW and Queensland with emerging markets in Victoria. It also provided an escape route from drought when the seasons failed. The Long Paddock is still a working stock route which provides us with a link to times and landscapes that are long since altered.

Unlike the early travellers and drovers who traversed the often harsh and unforgiving plains of the Riverina on horse back, coach or bike, we now see the world from the comfort of air-conditioned cars. We measure the trip in hours rather than days or weeks - in the early 1870's the Hay cricket team took 13 hours to travel one way by Cobb & Co coach to play Deniliquin!



## The History of The Long Paddock

As their flocks increased in numbers the early NSW graziers began looking for markets other than Sydney. In 1824 Hume and Hovell blazed a trail south to the eventual site of Melbourne which, by 1836 was growing rapidly. Adelaide was founded at about the same time and both settlements needed food while their agricultural industries were establishing.

The rivers were vital to the early overlanders. Travelling stock cannot go more than two days without water so the early stock routes followed the streams which were the only reliable water source. Those bound for Adelaide had several choices. The Darling rises in Queensland, joining the Murray near Mildura. The Lachlan, rising near Crookwell NSW, flows into the Murrumbidgee which could be followed from the Monaro region, beyond Canberra. In fact, most of the settled areas west of the Great Divide could easily access these western-flowing rivers.

The overlanders were looking for more than markets. Crossing the continent, they examined the potential of the vast areas of unsettled land through which they travelled. Many either relocated or expanded to places which had

caught their eye. By 1840 most of the eastern Riverina was settled, squatters taking up vast runs which they stocked with sheep and cattle. The first station established on what is now the Cobb Highway was Moira, between Moama and Mathoura, taken up by Henry Sayer Lewes, in August 1842.

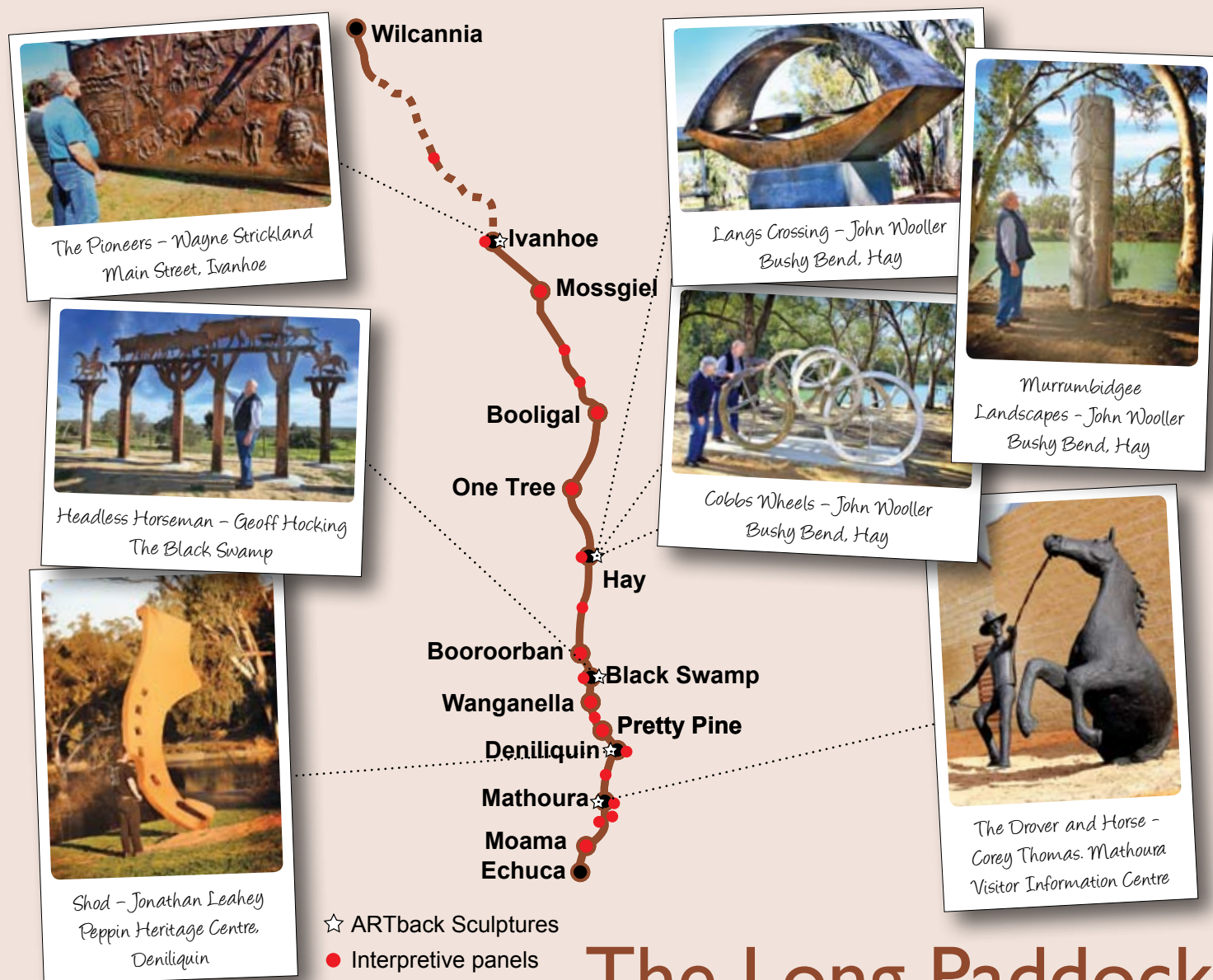
In 1851 gold was discovered in Victoria. Men (and a handful of women) flocked to the diggings from all over the world. Very few were vegetarians and the demand for fresh meat (there was no refrigeration then) sent stock prices soaring. Men like James Maiden, who had an inn and punt at what is now Moama, bought whole herds of stock and drove them to the goldfields.

Deniliquin, originally a station owned by Benjamin Boyd's Royal Bank, became a natural congregating point for south-bound stock. From 1847 it had a punt - vital for crossing sheep over the Edward River. It was not long before Deniliquin became an important livestock selling centre, eclipsing Moama. Mobs from as far away as northern NSW and even Queensland began streaming through the town, often changing hands for their final journey south. The legend of The Long Paddock had begun.



# ARTback – Sculptures of The Long Paddock

In 2009 seven large scale sculptures were placed along the touring route. Take a moment out of your journey to explore the artworks and take a photo for your friends and family back home - then share it with the world on The Long Paddock website. Send us a photo of yourself with all seven sculptures to join our Long Paddock Hall of Fame art gallery.



## The Long Paddock Interpretive panels



The interpretive panels are located at significant sites along the Cobb Highway. They are a wonderful mixture of truths, tales and images! To really experience the drovers' dream stop at each panel and become part of The Long Paddock. Watch for The Long Paddock Visitor Site signs telling you when the next sign is coming up.



# Itineraries

## Heritage

### INTRO

*The Long Paddock offers a wealth of history - from pastoral and social heritage through to natural history. If history is 'your thing', you'll find a museum and heritage walk in almost every town! Make sure you pick up a copy of The Long Paddock Audio CD - this will provide you with a great overview of significant historical sites and the folklore of The Long Paddock.*

### DAY 1

- Visit the Echuca Wharf and take a ride (and lunch!) on a paddlesteamer
- Wander through 'Old Moama', down Chanter Street then head north to Mathoura to view the display at the Visitor Information Centre

### DAY 2

- Visit the Peppin Heritage Centre, then head to the Edward River to take the Long Paddock walk
- Take the town heritage walk then visit the Pioneer Steam Museum

### DAY 3

- Visit the Peppin Ram Memorial at Wanganella, while you are there read about the history of the Cobb & Co
- View the Headless Horseman Sculpture at the Black Swamp and stop at the historic Boorooban Pub
- Start your tour of Hay's five museums with a visit to Shear Outback; The Australian Shearer's Hall of Fame
- Follow this with a visit to Bishop's Lodge Historic House
- Finish your afternoon by exploring the town via the Heritage Walk

### DAY 4

- Visit The Hay Gaol then experience the Hay Internment & Prisoner of War Camps Interpretive Centre, housed at Hay's historic railway station
- Learn more about Hay's war time contribution at the Hay War Memorial High School Museum in Pine Street

### DAY 5

- Head north to the One Tree Hotel - a former Cobb & Co Changing Station and view the giant Theodolite - a memorial to explorer and surveyor John Oxley at Booligal
- Take the Ivanhoe town heritage walk and stop and see The Long Paddock mural - 'The Pioneers', which provides a great visual depiction of the history of Ivanhoe

### DAY 6

- Make your way to the Athenaeum Library (1883) now the town's Pioneer Museum while visiting the beautiful sandstone buildings in Wilcannia

**Love your history and want to keep going?**  
*Check out the amazing historical opal field at White Cliffs and the beautifully restored colonial buildings at Milparinka. Head onto Bourke to check out the 'Back of Bourke' Exhibition Centre.*

## Fishing

### INTRO

*The Long Paddock is a fisherman's paradise with the route crossing five of Australia's most significant rivers - The Murray, The Edward, The Murrumbidgee, The Lachlan and The Darling. This is great country for catching Murray Cod, Yellowbelly, Bream and Redfin.*

### DAY 1

- What could be better than fishing the Mighty Murray?
- If you love your fishing, the best experiences are to be had downstream towards Torrumbarry or upstream at the Barmah and Moira Forests

### DAY 2

- The Murray and Edward Rivers and Gulpa Creek are all within 10km of Mathoura and are prized fishing grounds by anglers throughout Australia
- Head to Deniliquin where the Edward River is famous Australia wide for its fishing, in particular as home to the Murray Cod

### DAY 3

- The Billabong Creek at Wanganella is said to be the longest 'creek' in Australia, and fishermen will delight in finding the elusive Murray Cod here
- Hay has many great spots along the river for fishing, and the best times of year to fish are the Autumn months

### DAY 4

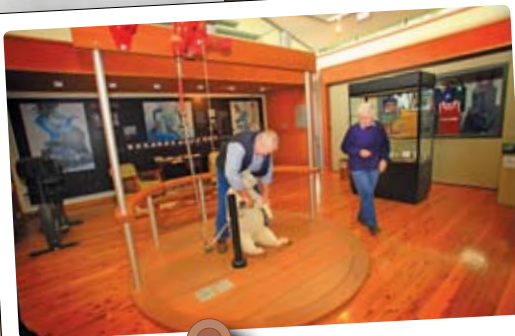
- The Lachlan River at Booligal is a popular fishing spot with large cod, perch and catfish to be had
- The Menindee Lakes is one of the finest freshwater fishing spots in NSW, with Murray cod, golden perch, silver perch, European carp, crayfish and catfish in abundant supply

### DAY 5

- Fishing the Darling River around Wilcannia is welcomed and the fishing is good!
- Fisherman are advised to check with local Visitor Information Centres regarding river levels, license requirements and bag limits prior to visiting any of these sites
- All of these sites offer great camping spots nearby

### Planning to continue your fishing trek?

*Why not follow the Darling River Run north - check out Tilpa, Louth, Bourke & finish with the 40,000 year old Aboriginal Fish Traps in Brewarrina?*





## Food, Wine, Great Outback Pubs & Grub

### INTRO

*Discover the perfect picnic spot, bush tucker, quirky pubs and great country fare that The Long Paddock has on offer....*

### DAY 1

- If you're in Echuca on the 1st, 3rd or 5th Saturday of the month, make sure you drop into the Farmer's Market
- Echuca Moama has earned a solid reputation for its food and wines and you can experience its many wonders along the Food and Wine Trail
- Head north to Mathoura & visit the historic Tattersals and Pastoral Hotels

### DAY 2

- The Mathoura Visitor & Business Centre invites people to taste the many local wines that are on sale within the Centre. Just down the road from the Visitor's Centre, you'll find fresh farm produce in season during the winter months at the Redgum Mandarin Stall on the Cobb Highway
- Head north to Deniliquin - no shortage of country pubs here! Deniliquin offers an array of choices when it comes to pubs, clubs and grub

### DAY 3

- A great place for breakfast in Deniliquin is The Crossing Café which works in partnership with local suppliers to bring you superbly fresh produce. Drop into the Visitor Information Centre just next door to the café and choose from some of the amazing home made jams and relishes - all from local produce
- Head out to Conargo for lunch at the famous Conargo Pub before stopping in at Clancy's of Conargo Winery where visitors can enjoy cellar door tasting's and winery tours
- Head north to the historic Royal Mail Hotel at Boorooban

### DAY 4

- In Hay you'll find a wide variety of fruit and vegetables all locally grown, picked and packaged - drop into the Visitor Information Centre in Moppett Street to enquire about tours through the Market Garden areas of Hay
- There are an array of country hotels in Hay, all of which are located within walking distance of the main street
- Stay overnight at the Duke of Edinburgh Hotel in Booligal. Here you'll find a cold beer, friendly locals and a place to rest your head for the night
- If you're in Hay between March & November, why not book in to see Shear Strife; A Baitlayers Tale. This fun filled sound & light show offers a great evening's entertainment and includes a traditional 'shearers' supper'

### DAY 5

- Visit Wilcannia and be sure to stop in at the Ivanhoe Pub on your way through town
- At White Cliffs dine underground for a truly unique experience

### Still Hungry... fancy a drink?

*If you feel like continuing your food, wine & outback grub tour there are plenty of other gastronomic delights waiting for you further down the track! Travelling further north? Why not follow the Darling River Run and catch your own dinner at Trilby Station near Louth, where you can fish for cod or yabbies for your own outback BBQ. Head to Tilpa for a cold one in the famous Royal Hotel.*

## Arts & Culture

### INTRO

*You will be delighted at the rich and diverse arts and cultural heritage of this region. Explore the ARTback Sculptures and discover local artisans, open studio programs and indigenous arts - you'll find your fill of arts along The Long Paddock!*

### DAY 1

- Pick up a local Arts & Culture Tour Itinerary from the Echuca Moama Visitor Information Centre. On your way out of Moama, visit the hand carved sculpture of James Maiden at the Moama Adventure Playpark
- Admire original Redgum craft in the Mathoura Visitor Information Centre and view the Long Paddock Sculpture, 'The Drover and Horse' by Corey Thomas
- In Deni check out Transmute the mosaic ute and see The Long Paddock Sculpture - 'Shod' by Jonathan Leahey
- Visit the Peppin Heritage Centre Gallery Space, where a variety of temporary exhibitions are on display throughout the year

### DAY 2

- Head to 'East Tolans' to view the amazing sculpture garden (check with Visitor Information Centre staff first)
- Visit the Peppin Ram memorial at Wanganella
- Head north and you'll see the amazing Long Paddock 'Headless Horseman' sculptural installation by Geoff Hocking

### DAY 3

- In Hay start the day by seeing if you can 'get lost' in the 'Round-Up Maze' at Shear Outback!
- Drop into the Visiting Exhibitions Gallery while you are here
- Explore the sculptural trail by artist John Wooller (located at the southern end of town). While you are here, take a look at the Warakirri Murals under the bridge
- Visit the Chris McClelland gallery and view his internationally award winning art

### DAY 4

- Head to Ivanhoe to see 'The Pioneers', a spectacular three dimensional mural by Wayne Strickland that documents the history of the Ivanhoe district
- In Wilcannia you'll find an amazing treasure trove of traditional indigenous craftspeople - it's well worth exploring this area and a great way to finish your arts tour of The Long Paddock!

### Want more?

*To continue your arts exploration, we recommend you travel westwards to Broken Hill... known for its outstanding Outback artists, rich indigenous culture and amazing Sculpture Symposium or Bourke which has a rich artist community.*





# Murray Region

Moama, Mathoura, Bunnaloo, Womboota & Caldwell

As the name suggests the Murray Region is located on the mighty Murray River, making the area a haven for anyone who loves the water. With two main townships and quaint surrounding villages the Murray Region is an ideal holiday location just hours from Melbourne. The area is steeped in history and is a great base from which to explore nearby regions, red gum forests and wetlands.

## Murray Region at a glance

**Towns and Villages:** Moama, Mathoura, Bunnaloo, Womboota & Caldwell

**Population:** Moama - 5,119 Mathoura - 824

**Main Industries :** Tourism, Manufacturing, Timber, Sheep, Wheat, Rice and Viticulture

**River:** The Murray

### Did you know?

Echuca - Moama is home to the oldest paddlesteamer in the world - the PS Adelaide built in 1866

### Events

**February -** Riverboats Jazz Food and Wine Festival  
**March -** Echuca Moama Autumn Harvest Festival  
 Mathoura Fishing Classic  
**June -** Steam, Horse and Vintage Rally  
**October -** Port of Echuca Heritage Steam Festival  
**November -** Cadell Fair, Mathoura - Saturday before Melbourne Cup

## Must See And Dos

- ✓ Discover the historic Echuca Wharf, an authentic working river port, and cruise the Murray River aboard an historic paddlesteamer.
- ✓ Take a peaceful cruise through the Barmah Wetlands, an area of international recognition. See the world's largest red gum forest and hundreds of types of birds including wading and migratory species.
- ✓ Check out the internationally important Gulpa Creek Reed Beds Bird Observatory.
- ✓ Experience the first class food and wine on offer at the many local restaurants and wineries.
- ✓ Witness the trials of drovers in days gone by in 'The Drover and Horse' Sculpture at Mathoura.



**Echuca Moama Visitor Information Centre**  
 2 Heygarth Street, Echuca Vic. 3564  
**Freecall:** 1800 804 406  
**Website:** www.Echucamoama.com



**Mathoura Visitor Information Centre**  
 Cobb Highway, Mathoura NSW 2710

## Moama

Echuca and Moama are neighbouring towns separated by the Murray River, the border between Victoria and New South Wales. They have become a combined community aiming to make the area a desirable place to live and an interesting destination for visitors and both sides work together to this end. Each has a different history.

## History

Moama, established in 1845 by James Maiden - ex-convict, punt owner, station manager, stock dealer, publican and post master - became a market, providing meat for miners at the Bendigo diggings. It was known then as Maiden's Punt. Big deals took place in Maiden's Junction Inn and for a time it was the busiest stock market in Australia. Maiden made a fortune supplying the Bendigo diggings and then lost it.

Three years later the village area was surveyed. Lots were put up for sale and the town was renamed Moama.

But its prosperity was short lived. When the gold petered out and the big flood of 1870 submerged it, Moama followed Maiden into obscurity.

Relocated to higher ground it rallied again with the arrival of the Deniliquin and Moama Railway in 1876 and the opening of the Iron Bridge across the Murray two years later.

Today, visitors are encouraged to wander around 'Old Moama' and the site of Maiden's Inn and punt crossing, located in Chanter Street, in Moama's east.

Echuca was founded by another ex-convict, Henry Hopwood, who established a commercial empire on the south bank of the Murray in 1853. That year marked the arrival of the first paddle steamer and Hopwood recognised the potential. He pressured the Government into providing a railway, which opened in 1864. Soon afterwards a port was established at the terminus and the river boats began transporting wool and other goods along the Murray-Darling and Murrumbidgee Rivers to the new railhead.

## Attractions

The Historic Port Area in Echuca was once the largest inland port in Australia, with a 1.2 kilometre wharf built in 1865. Today, the Port of Echuca is an authentic working steam port where you can tread the boards on the huge redgum wharf and be taken back to an era when Echuca was once a bustling river port.

The Port is now home to the world's largest collection of paddle steamers. Many have been fully restored and offer daily cruises, which provide an insight into life on the river 100 years ago. Visitors can enjoy short trips, lunch and dinner cruises or overnight stays aboard the paddle steamers.

The historic Port area adjoining the wharf is like a living museum. Horse drawn carriages crunch gravel roadways lined with historic buildings, hotels, tearooms, a working blacksmith and woodturner, all adding to the character and atmosphere at the historic precinct.

With more than 50 eateries in Echuca-Moama, dining experiences are plentiful. Enjoy great shopping in big-name department stores, intimate gift shops and many cafes in the town-centre, as well as the unique shopping strip of historic High Street.

Surrounded by the mighty Murray River and bushland, Moama has a lot to offer visitors and residents alike, with impressive clubs, international bowling greens, championship golf course, cellar doors and outstanding tourist drives.





## Mathoura

Mathoura is just 40km north of Echuca - Moama. It is a gateway to Australia's largest redgum forest and wetlands of international significance. It has arguably the best access in the region to the Murray River, with good dry weather roads and no high banks.

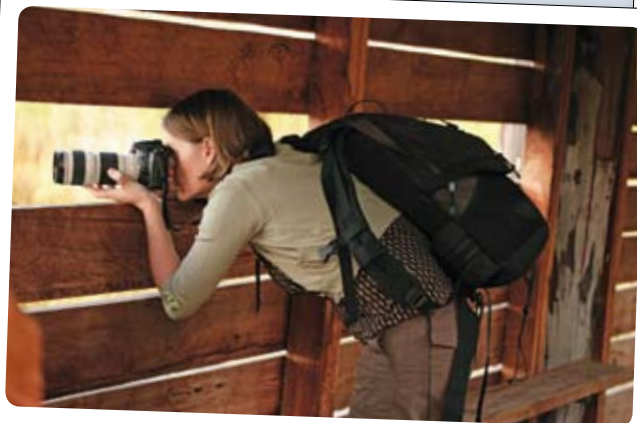
It began as a market garden and a pub on a drovers' track beside the Gulpa Creek in the mid - 1800s, and built itself as a timber source for the developing young nation of Australia. Today, it is a favoured destination for lovers of a gentle country lifestyle and those seeking peaceful holidays amid forests, waterways and a beautiful natural environment.

## History

As the overlanders trekked Queensland cattle and sheep to Adelaide and Melbourne markets, the runs they passed through soon began to sprout services and settlements. Mathoura Station was one such run. It was taken up by Peter Stuckey in 1842 and comprised 60,000 acres.

Around 1853 a Yorkshireman named William Carter took over a rough pub known as Ward's Inn. Two years later he replaced the original slab inn with a brick building and named it "Redbank Inn" after the distinctive edge of the Cadell Fault on which it perched. (The Cadell Fault is a ridge running from Echuca to Deniliquin, formed when the land was thrust upwards by earthquakes perhaps 30,000 years ago).

The Cadell uplift diverted the Murray River's westward course which formerly ran close to Mathoura - look for undulations marking the river's old bed near the town. The wall of earth holding back water in flood times created new flood plains and a complex system of lakes and creeks, ideal conditions for the establishment of what is now the largest river red gum (*Eucalyptus Camaldulensis*) forest in Australia.



The Cobb Highway runs along the uplifted portion, up to 15 metres above land east of the fault, making it possible in some places to look directly over the canopy of trees growing on the lower level.

Mathoura's history owes much to the sleeper cutters, sawmill operators and charcoal producers who cut and processed the region's renowned timber.

## Attractions

The collectively known Barmah-Millewa Forest covers more than 70,000 hectares and is the largest Redgum forest in Australia. Frequent flooding has created a vast mosaic of seasonal wetlands. The area is home to hundreds of plant, bird and animal species and is a great playground for visitors to explore.

The Murray and Edward Rivers and the Gulpa Creek, prized by anglers, are within 10km of Mathoura. The Gulpa Creek Reed Beds Bird Observatory is a world class bird watching facility, providing accessible viewing of exceptional birdlife, when the wetlands are flooded.

Experience one of the many forest walks and drives on offer, utilise the picnic sites and barbeque facilities available, go camping, canoeing, swimming, play golf or tennis, wander along the heritage walk, enjoy wine tasting or learn more about the region along the Murray Valley Trail.

Stop in at the Mathoura Visitor Information Centre to see the amazing 'Horse and Drover' sculpture. The centre also sells local wine and produce and houses a bank and library.





## Accommodation

**Magic Murray Houseboats**

Cruising the Murray River is the ultimate way to relax. Experience the magic of the Murray River in your own floating home. Explore the Murray River, experience the rich pioneering past at the Historic Port of Echuca, enjoy food, wine, and country hospitality second to none.

Discover a wonderful climate and location that will reward you with a fantastic holiday.

**Address:** Deniliquin Street, Moama NSW 2731

**Freecall:** 1800 356 483

**Phone:** 03 5480 6099 **Fax:** 03 5480 6690

**Email:** magicmurray@aspenparks.com.au

**Website:** www.aspenparks.com.au

## Accommodation

**Murray River Holiday Park**

Enjoy the relaxed atmosphere of Murray River Holiday Park.

Offering a diverse range of accommodations to suit all budgets - Caravan, Camping & Cabin accommodation. Located approximately 100 metres (walking distance) to Moama Bowling Club, V/Line bus terminal, shopping centre, restaurants, hotels or a 5 minute walk to the mighty Murray River.

**Address:** 2 Blair Street, Moama NSW 2731

**Freecall:** 1800 357 215

**Phone:** 03 5480 9899 **Fax:** 03 5480 9898

**Email:** murrayriver@aspenparks.com.au

**Website:** www.aspenparks.com.au

## Accommodation

**Maiden's Inn Holiday Park**

Maiden's Inn Holiday Park is located on the banks of the Murray River and close to the historic Port of Echuca.

The twin towns of Echuca - Moama offer a diverse range of activities and year-round events to entertain holiday makers of all ages.

Maiden's Inn offers a variety of holiday accommodation options from Caravan and Camping Sites through to Deluxe Spa Villas.

**Address:** Deniliquin Street, Moama NSW 2731

**Freecall:** 1800 356 801

**Phone:** 03 5480 9253 **Fax:** 03 5482 1732

**Email:** maidensinn@aspenparks.com.au

**Website:** www.aspenparks.com.au

## Accommodation

**A Shady River Holiday Park**

Just two and a half hours from Melbourne, located in the twin towns of Echuca - Moama.

A Shady River Holiday Park is situated on 10.5 hectares of natural bush and gardens. Offering Caravan, Camping and Cabin accommodation, A Shady River Holiday Park has something for everyone!

Experience the Murray - take a journey in a paddlesteamer, go fishing, canoeing or waterskiing.

**Address:** Merool Lane, Moama NSW 2731

**Freecall:** 1800 674 239

**Phone:** 03 5482 5500 **Fax:** 03 5480 9358

**Email:** shadyriver@aspenparks.com.au

**Website:** www.aspenparks.com.au

## Accommodation



### Yarraby Holiday Park

Yarraby Holiday Park provides guests with a magnificent holiday destination right on the Murray River. Offering Caravan, Camping, Cabin and Villa accommodation at great value rates. Yarraby Holiday Park the perfect environment to simply relax and enjoy life.

There is plenty to keep the kids entertained while Mum & Dad sit back on one of the well sized verandahs and enjoy a relaxing beverage with friends.

**Address:** 75 River Avenue, Echuca Vic. 3564

**Freecall:** 1800 222 052

**Phone:** 03 5482 1533 **Fax:** 03 5482 5809

**Email:** yarraby@aspenparks.com.au

**Website:** www.aspenparks.com.au

## Accommodation



### Rich River Holiday & Lifestyle Village

Rich River Holiday & Lifestyle Village is the perfect place for your next Victorian holiday. Just a brief stroll from the mighty Murray River & close to a popular boat ramp and fishing spot, our village is a short drive to the historic river port of Echuca.

The Village features an outdoor pool with shaded toddler pool, games room, undercover BBQ areas, playground and grassed sites. The Park's facilities and friendly, relaxing atmosphere mean that you can unwind from the moment you arrive. We offer a range of accommodation whether you're looking for a holiday for a couple or the whole family, there's truly something for everyone.

**Address:** Crescent Street, Echuca Vic. 3564

**Phone:** 03 5482 3658 **Fax:** 03 5480 2214

**Email:** info@richriver.net

**Website:** www.richriver.net

## Accommodation



### Cadell On The Murray Motel Resort

The only motel in Echuca - Moama right on the banks of the Murray! Relax, discover and enjoy our peaceful surrounds, great facilities and first class hospitality.

**Address:** Perricoota Road (PO Box 461), Moama NSW 2731

**Phone:** 03 5482 4500

**Fax:** 03 5482 6863

**Email:** enquiries@cadellonthemurray.com

**Website:** www.cadellonthemurray.com

## Accommodation



### Sportslander Motor Inn

Commence your "Long Paddock" experience enjoying country hospitality at The Sportslander Motor Inn. Offering spacious Queen, Family, 2 Bedroom and Luxury Spa Suites in a stunning garden setting. *Mention this ad. for "special rates"*

• Salt water Pool • BBQs & Gazebos • Opposite Shopping Centre • Adjacent to Club

**Address:** 1 Perricoota Road, Moama NSW 2731

**Phone:** 03 54824366

**Fax:** 03 54806467

**Email:** admin@sportslander.com.au

**Website:** www.sportslander.com.au

## Accommodation / Attractions



### Border Inn Hotel

Fantastic open plan restaurant with beautiful el fresco dining areas. Public bar with full TAB facilities, TV's sky channel & Fox sports. Drive Bottle shop - Thirsty Camel. 24 room 3.5 star motel complex. 12 budget motel rooms available. Conference and Function room with all required equipment courtyard and bar.

**Address:** 19 - 21 Meninya Street, Moama NSW 2731

**Phone:** 03 5480 9966

**Fax:** 03 5482 5284

**Email:** info@borderinn.com.au

**Website:** www.borderinn.com.au

## Accommodation

**Bridges On Meninya Motel & Apartments**

Modern facility with a variety of motel rooms, S/C 1 bedroom apartments & 2 bedroom S/C balcony spa apartments. Free wireless broadband internet & Austar, 82cm LCD TV, microwave, solar heated pool, grass recreation & BBQ area with bush setting.

**Address:** 38 Meninya Street, Moama NSW 2731  
**Phone:** 03 5482 1885 **Email:** bridgesonmeninya@bigpond.com  
**Fax:** 03 5480 0432 **Website:** www.bridgesonmeninya.com



## Attractions

**Chanter Estate Winery and Military Museum**

Enjoy the ambience of this 100 year old church building that has been transformed into a tasting bar and cellar door sales. Historic commercial and military vehicle display. Open weekends, school & public holidays 10am - 4:30pm any other time by appointment please ring A/H 03 5480 7878

**Address:** Chanter Street, Moama NSW 2731  
**Phone:** 03 5480 0334 **Fax:** 03 5480 0335  
**Website:** www.chanterestate.com.au



## Attractions

**The Old School Winery & Meadery**

Taste the romance of the past  
 Distinctive handcrafted wines and meads (honey wines).  
 Mead - Mulling, free wine tasting, pottery studio tea & coffee. OPEN DAILY.

**Address:** School Road, Womboota NSW 2731  
**Phone:** 03 5489 3249  
**Email:** oscwinery@mcmedia.com.au



## Attractions

**Sharps Magic Movie House and Penny Arcade**

On entering Sharps Magic Movie House and Penny Arcade your senses will be filled with the sounds of audiences laughing at the silent movies, penny's dropping into the antique penny arcade machines and the sumptuous smell of fudge being made in front of your eyes. We have over 30 flavours of fudge and tasting is free.

**Phone:** 03 5482 2361 **Address:** 43 Murray Esplanade, Echuca Vic. 3564  
**Email:** smmhpa@bigpond.net.au **Website:** sharpsmoviehouse.com.au



## Attractions

**Echuca Heritage Sweet Company**

Located near the historic Port of Echuca, the ECHUCA HERITAGE SWEET COMPANY offers only the finest quality chocolate and confectionery. Our range includes confectionery manufactured locally and around Australia by craftsmen confectioners using the finest ingredients.

**Phone:** 03 5480 6072 **Address:** 606 High Street, Echuca Vic. 3564  
**Email:** lollies@echucaheritagesweetcompany.com.au  
**Website:** echucaheritagesweetcompany.com.au





## Attractions



### Murray River Paddlesteamers

For those who are just passionate about steam the PS Emmylou offers daily cruises where you can let go of your worries and watch the world drift slowly by.

Why not enjoy lunch or an evening cruise where you can sit back and enjoy a relaxing meal.

For a unique experience, PS Emmylou also offers accommodated steaming with fine cuisine. One, two or three night cruises are available.

**Address:** 57 Murray Esplanade, Echuca Vic. 3564

**Phone:** 03 5482 5244

**Email:** info@emmylou.com.au

**Website:** www.murraypaddlesteamers.com.au

## Attractions



### Echuca Moama RSL & Citizens Club

- Suvla Bay Bistro and Corvettes Cafe • FREE Courtesy Bus (bookings essential) • NSW TAB and ClubKENO
- Outdoor Children's Playground • Indoor PlayStation Centre (FREE playing PS2/PS3 games) • Sports Bar with HUGE Plasma Screens • Takeaway Alcohol and Ice
- Open for Lunch and Dinner 7 Days
- Club Memberships

*Open daily from 10am until late*

Think! About your choices  
CALL GAMBLING HELP 1800 858 858  
www.gamblinghelp.nsw.gov.au

All information is correct at time of printing.

**Address:** Merool Lane (PO Box 41) Moama NSW 2731

**Phone:** 03 5482 6677 **Fax:** 03 5482 4162

**Email:** enquiries@rslmoama.com.au

## Attractions



**Kingfisher Cruises**  
BARMAH

**eco**  
CERTIFIED  
Ecotourism

### Kingfisher Cruises

Eco-tourism at its best. You will experience timeless, natural beauty and peace when gliding along the "Barmah Choke" on the Murray River. An area 25,000 years in the making.

#### BOOKING ESSENTIAL

Only 30 minutes drive from Echuca-Moama – departs from **Barmah Lakes Day Visitors Area.**

Monday, Wednesday, Thursday, Saturday and Sunday.

**Address:** PO Box 62 Merrigum Vic. 3618

**Phone:** 03 5855 2855

**Website:** www.kingfishercruises.com.au



### Long Paddock Audio Tour CD

Take a tour along the Long Paddock at your own pace.

The Long Paddock Audio Tour CD is a great way to get to know the region. The 2 CD's are packed with local information, tales and stories both historical and current. Pick up a CD at one of the Visitor Information Centres along the route.

The Long Paddock also has a terrific range of merchandise available to remind you of your trip, including a DVD and stress cow!

For more information visit  
www.thelongpaddock.com.au



# BILLABONG RANCH

## FUN PARK, HORSE RIDES & CARRIAGES

**ENTERTAINMENT FOR ALL AGES - ON ONE GREAT SITE**  
**A MUST SEE WHEN IN ECHUCA-MOAMA**

### INDOOR FUN

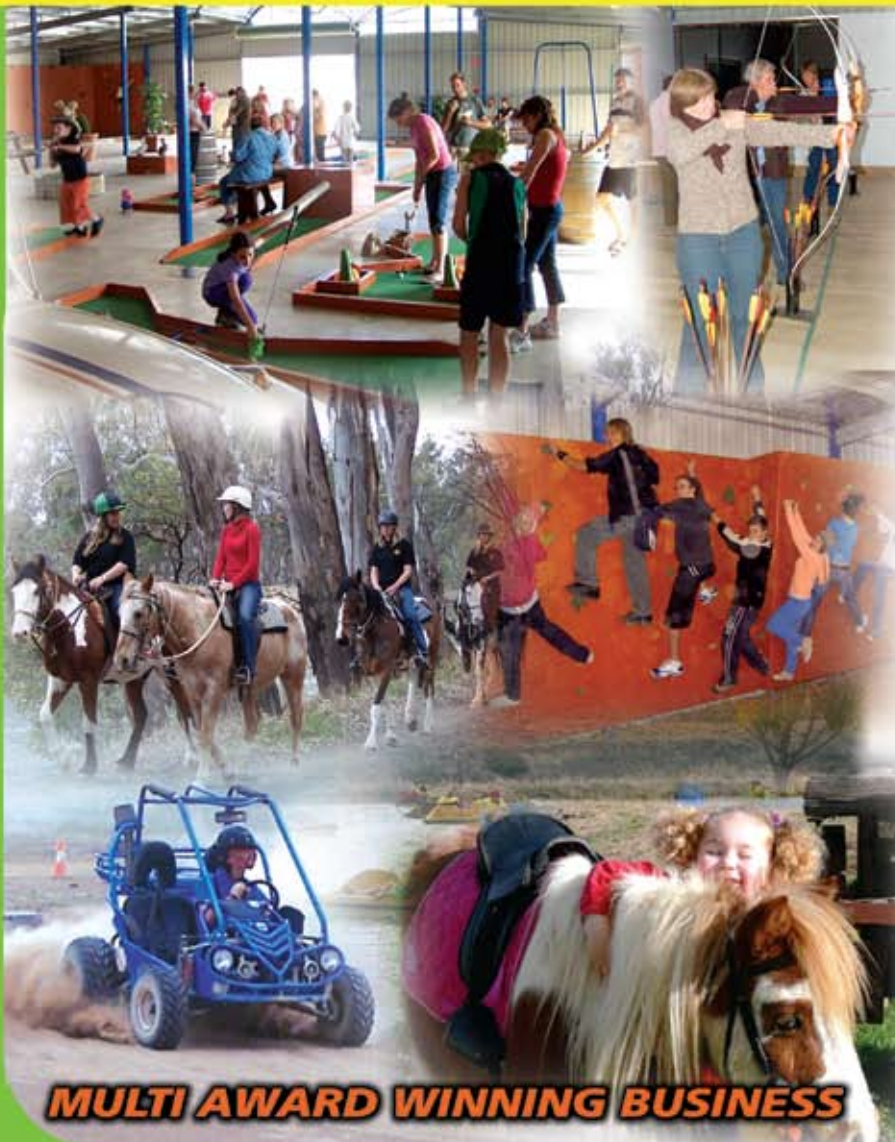
- Mini Golf
- Boulderling Wall
- Archery
- Animal Nursery
- Licensed Family Restaurant

### OUTDOORS

- Horse Riding
- Extreme Buggies
- Pony Rides
- Pedal Boats
- Ten Pin Bowling
- Beach Volleyball

### ALSO

- Variety of Carriages
- School & Holiday Camps, Group Accommodation
- Pub & Winery Rides & Tours



**MULTI AWARD WINNING BUSINESS**



**Phone: (03) 5483 5122**  
**[www.billabongranch.com.au](http://www.billabongranch.com.au)**

**HSA Accredited Trail Guides & Instructors / Commercial Carriages Drivers**



### TEAM PENNING

**Every Month - Check our website for details**





# Deniliquin Region

Deniliquin is an oasis of green on the edge of the Riverine plain, which stretches northwards in what is claimed to be the flattest land on earth - the beginning of the outback.



## Deniliquin Region at a glance

**Towns and Villages:** Deniliquin

**Population:** 8,000

**Main Industries :** Rice, Wool, Sheep Drilling, Manufacturing, Cereal Crops and Cattle

**River:** The Edward

### Did you know?

Deniliquin holds the world record for the greatest number of utes assembled in one location at one time (7,424 utes set in 2008).

### Events

**January -** Deni Races - New Years day and ANZAC Day  
Deni RSL Fishing Club Classic

**April -** Deni Rodeo & Sun Festival in Waring Gardens  
Seniors Muster

**July -** Rotary Easter Art Show  
Bald Archy Prize Art Exhibition

**October -** Deni Play on the Plains Festival (World Record Ute Muster) - NSW October long weekend  
Wamba Wamba Perrepa Perrepa Cultural week – 3rd week in October

## Must See and Dos

- ✓ Explore the history of wool through the Peppin Heritage Centre.
- ✓ Take the Beach to Beach cycle and walking path from McLeans Beach to the Island Sanctuary, home to a large array of birdlife and wildlife, and finishing at the Yarkuwa Indigenous Knowledge Centre.
- ✓ Check out the Ute on the Pole and the Mosaic Ute which both commemorate Deniliquin's status as the ute capital of the world.
- ✓ Go waterskiing, canoeing or line fishing in and around the Edward River's sandy beaches and lagoons, not forgetting the wonderful State forest in the centre of town with endless winding tracks.
- ✓ Discover the giant bullock's shoe sculpture 'Shod' at the Peppin Heritage Centre.



**Deniliquin Visitor Information Centre**  
George Street, Deniliquin NSW 2710



## Deniliquin

Deniliquin is situated on the Edward River, in the centre of Riverina sheep station country and on the fringe of the world's largest redgum forest, where bird and wildlife abound.

The natural attractions of the region and the well developed network of forest trails offer you the chance to free your adventurous spirit. Try camping, kayaking, biking, bird watching, swimming, fishing or water-skiing.

## History

Deniliquin is in every sense a crossing place. The township sprung up at a favoured spot on the Edward River where drovers forded or swam their stock across on their journey along 'The Long Paddock' - the travelling stock route. Up to three stock routes converged there and it was soon an important stock market.

The area was originally inhabited by the Wamba Wamba nation of indigenous people. Their traditional boundaries included the Barapa Barapa tribe from the Barham area and adjoined the lands of the Yorta Yorta nation.

Seeking to extend his pastoral holdings inland, Scottish banking entrepreneur Benjamin Boyd commissioned a young Victorian station owner, Augustus Morris, to look for land north of the Murray River. Around 1843 Morris took up 700,00 acres, the Deniliquin Run, for Boyd. Commencing just north of the Murray it extended to half way between the Billabong Creek and the Murrumbidgee River, following the Edward river westward towards Balranald.

The first inn, named the "Wanderer" after Boyd's yacht, was erected in 1847 on the ground now occupied by the North Deniliquin School. That same year James Maiden moved his old punt from Moama on the Murray and set it up at Deniliquin, at the end of what is now Edwardes Street. A Dr Coward, the first resident on the south side of the river, settled on what is now the Island

Sanctuary, just upstream of the punt. The town site was surveyed in 1848 and gazetted in 1850. Deniliquin became the district's police administrative centre. Its first gaol, built in 1856, was replaced by a large brick building in 1864. At times the gaol housed as many as 75 prisoners; three hangings took place within its walls. It was demolished in 1966.

The Deniliquin Court House was built in 1883 and is located in Poicters Street not far from the wonderful Waring Gardens. A splendid building, its handsome lines are probably better suited to a provincial city. It is an impressive reminder of the faith our forefathers had in the future of Deniliquin.

In 1859 the town had two hospitals, which amalgamated in 1861. An interesting relic, a stained glass window depicting Hygeia, the goddess of health, survives in the present hospital foyer.

In 1859 local squatters embraced new technology. After unsuccessfully lobbying the government for a telegraph line to give them immediate market prices for stock in Melbourne, they formed a company and built their own line to Moama from where telegrams were taken across the river to Echuca, already connected to Melbourne.

In 1876 the town built its own railway to Echuca after again being denied government assistance. It remained profitable until taken over by the Victorian Railways in 1923.



The Robertson Land Laws of 1861 allowed the vast areas of land held under lease by the "squatters" to be split up into small holdings under a "Conditional Purchase" scheme which brought many settlers to the district.

The land underwent further subdivision following both the First and Second World Wars, when small blocks were made available to returned servicemen under Closer Settlement schemes. Availability of water from the Mulwala Canal system allowed for subdivision into quite small blocks and the development of a range of new enterprises.

Today, while the Denilquin district still supports a thriving wool industry there is now greater emphasis on production from beef cattle, fat lambs, oil seeds, dairying, and cereal crops. Denilquin is now the centre of an extensive rice growing region and is home to one of the largest rice mills in the world.



## Attractions

The Denilquin Peppin Heritage Centre and Visitor Information Centre are housed in the first Public School, the building dating from 1879. The Centre is a regional museum concentrating on the Peppin Merino and the influence the pioneering men and women had in building a successful Merino industry. It also has an authentic 1930's style classroom and a main gallery where local and travelling exhibitions are held regularly.

A stroll along the Heritage RiverWalk will take you past some of the old buildings, the red gum trees that line the river and you may be able to spot some of the birds that can be found in the area. The walk takes you past the ute on the pole, the mosaic ute and The Long Paddock sculpture called 'Shod' which depicts a giant half of a bullock's shoe.

Visit the Denilquin Historical Society located in the old 1880's Police Inspector's residence. Each room is filled with wonders of a bygone era.

Wander through the Island Sanctuary, where there are kangaroos, possums, bats, and birds aplenty amidst river red gum. Book in at the Yarkuwa Knowledge Centre for a guided tour.

Wander through the Waring Gardens opposite Denilquin's main shopping strip in Cressy Street and discover the Bird Sanctuary and plenty of picnic spots with BBQ facilities. Learn about the rich history of the famous stock route along The Long Paddock RiverWalk starting at the Peppin Heritage Centre. Visit the Pioneer Garden Centre and Steam Pump Display, where restored steam engines and pumps are displayed, or take photos of the ute on a pole, erected in celebration of the annual World Record Ute Muster.

*The Visitor Information Centre with its friendly and knowledgeable staff and volunteers will make sure you do not miss any of the attractions Denilquin has to offer.*

## Shops / Services



### The Country Store

A commission based social business located in Denilquin. All goods purchased from the store will benefit local individuals, families and community groups.

Open Tuesday to Friday, 9:30am - 4:30pm

**Address:** Corner Trickett & Napier Streets (PO Box 501), Denilquin NSW 2710

**Phone:** 03 5881 1855

**Fax:** 03 5881 5440

**Email:** [nhc@intereach.com.au](mailto:nhc@intereach.com.au)

**Website:** [www.intereach.com.au](http://www.intereach.com.au)



## Accommodation

## Deniliquin Riverside Caravan Park

300m to CBD, riverfront drive-thru sites, TV aerials, free BBQ's, camp kitchen, recreational room, wireless internet, pool, boat ramp, fires okay, pet friendly. Cabins motel style to deluxe 2 bedroom, linen provided. 10% discount for Family Parks members.

**Address:** 20 - 24 Davidson Street (Cobb Hwy), Deniliquin NSW 2710  
**Phone:** 03 5881 1284 **Email:** info@deniliquinriversidecaravanpark.com.au  
**Fax:** 03 5881 7494 **Website:** www.deniliquinriversidecaravanpark.com.au



## Accommodation

## BIG4 Deniliquin Paringa Holiday Park

Experience our unique accommodation overlooking the beautiful Edward River, large grassed sites, riverfront camping, activities for the kids all provide for your next relaxing getaway.

**Address:** Ochertyre Street, Deniliquin NSW 2710  
**Phone:** 03 5881 1131 **Email:** info@paringa.com  
**Fax:** 03 5881 1999 **Website:** www.big4deniliquin.com



## Accommodation

## Pioneer Tourist Park

Pioneer is a small, quite, friendly park which offers - Deluxe Cabins, Drive Thru ensuite sites with TV connection, Tennis court, Pool, Bushwalking Trails and Steam Museum.

**Address:** 167 Hay Road (Cobb Highway), Deniliquin NSW 2710  
**Phone:** 03 5881 5066 **Email:** pioneert@bigpond.net.au  
**Fax:** 03 5881 5022 **Website:** www.pioneertouristpark.com.au



## Attractions



## Deniliquin RSL Club - Your Favourite Club!

## Beer Garden

Welcome to our wonderful Beer Garden where you can stay warm in winter and cool in summer, simply sit back and relax and enjoy our hospitality with a refreshing drink and watching your favourite sport on the big screen.

Why not organise a social BBQ in our Beer Garden.  
 Menu's available

**Address:** 72 End St, (PO Box 525) Deniliquin NSW 2710  
**Phone:** 03 5881 1455 **Fax:** 03 5881 4147  
**Email:** denirsl@deniliquinrsl.com

## Attractions

Coffee Shop  
 Open From 11am 7 Days



## Deniliquin RSL Club - Your Favourite Club!

## Coffee Shop

Our Coffee shop is open everyday till late. Scrumptious Cakes, slices, tea, coffee, milkshakes, spiders and a large assortment of sandwiches, Foccacias and also available, Hot food.

Stay an hour or stay all day and enjoy!

**Address:** 72 End St, (PO Box 525) Deniliquin NSW 2710  
**Phone:** 03 5881 1455 **Fax:** 03 5881 4147  
**Email:** denirsl@deniliquinrsl.com



## Attractions &amp; Shops / Services

**Deniliquin Visitor Information Centre**

The Peppin Heritage Centre incorporates a Visitor Information Centre, Exhibition Space and Museum that is open and available to the public daily from 9am - 4pm - entry by gold coin donation.

Situated right next door to The Crossing Cafe, visitors can relax and enjoy the river views, surrounding lawns, great coffees - open breakfast, lunch and dinner.

**Peppin Heritage Centre**

**Address:** George Street, Deniliquin NSW 2710

**Freecall:** 1800 650 712

**Email:** [info@deniliquin.nsw.gov.au](mailto:info@deniliquin.nsw.gov.au)

**Website:** [www.denitourism.com.au](http://www.denitourism.com.au)

**The Crossing Cafe**

**Phone:** 03 5881 7827

**Website:** [www.thecrossingcafe.com.au](http://www.thecrossingcafe.com.au)

## Shops / Services



**Central IGA** - In the heart of the town Central IGA is an award winning store that can cater for all your needs. Open 7 days a week, 8am-8pm weekdays, 8am-6pm Saturdays & 9am-6pm Sundays.

Deni's Fresh Food Specialist.

**Address:** Corner George & Napier Streets,  
Deniliquin NSW 2710

**Phone:** 03 5881 2344 **Fax:** 03 5881 4570

**Josh's Bakehouse** - A place to sit and relax over a cappuccino and slice or enjoy a toasted focaccia or pie with a milkshake for lunch.

Monday - Friday 6am-5:30pm & Saturday 6am-12:30pm

**Address:** Corner George & Napier Streets,  
Deniliquin NSW 2710

**Phone:** 03 5881 3499 **Fax:** 03 5881 1169

# Something for Everyone



With more healthier options than ever there really is 'Something for Everyone' at McDonald's® Deniliquin & Echuca

**Come in and relax at McCafé.**

McDonald's Deniliquin: 386-388 Charlotte St

McDonald's Echuca: 479-489 High St

**McCafé**

**McCafé Deniliquin Opening Late 2009**



# Road safety tips and Outback Etiquette

- Make sure your vehicle is well prepared, include at least one spare tyre. In the event of a breakdown, stay near your vehicle. Carry spare fuel, food and water. For more information on safe travel visit [www.rta.nsw.gov.au](http://www.rta.nsw.gov.au) or call 13 22 13.
- Drive to conditions. Keep to, or below the speed limit and slow down on dirt and gravel roads when your vision is obscured by the sun or dust. Dust from other vehicles, especially oncoming vehicles can obscure hazards. Drive with your headlights on.
- Look out for animals and avoid travelling at dawn, dusk and at night as native wildlife are active and stock may wander. Ask a passenger to help scan the road ahead. And remember, if you cannot stop it is safer to hit the animal then to swerve and to risk losing control of your vehicle.
- To report injured wildlife phone WIRES on 1800 641 188.
- When you see a stock sign or stock, slow down - stock have right of way. Never use your horn.
- Observe RTA and local council advisory signs and notices concerning road closures. Roads are closed for your safety.
- Before setting out on unsealed roads (between Ivanhoe and Wilcannia) check road conditions with the local Visitor Information Centre, local council, police or motoring authority. Rain may cause closure of these roads. Special care should be taken if driving on remote and local roads.
- Mobile phones will only work in some areas and close to townships. Always make sure you tell someone where you are going and when you expect to arrive.

Towns at a Glance	Echuca	Moama	Mathoura	Deniliquin	Pretty Pine	Wanganella	Booroorban	Hay	Booligal	Ivanhoe	Wilcannia	White Cliffs
<b>ACCOMMODATION</b>												
Motel	•	•	•	•				•		•	•	•
Caravan Park	•	•	•	•			•	•		•	•	•
Hotel	•	•	•	•	•		•	•	•	•	•	•
Camping	•	•	•	•		•	•	•	•	•	•	•
Farm Stay	•	•	•	•		•	•	•				•
B & B	•	•	•	•				•				•
<b>DINING</b>												
Restaurants	•	•		•				•				
Clubs	•	•	•	•				•		•	•	•
Hotels	•	•	•	•	•	•	•	•	•	•	•	•
Cafe	•	•	•	•		•		•		•	•	•
Take away	•	•	•	•		•		•		•	•	•
<b>AUTOMOBILE</b>												
Petrol	•	•	•	•		•		24 hr	•	•	•	•
Diesel	•	•	•	•				24 hr	•	•	•	•
LPG	•	•		•				24 hr	•		•	
Mechanical	•	•	•	•				•		•		
NRMA depot	•	•		•				•		•		
<b>MEDICAL</b>												
Doctor	•	•		•				•		RFDS	RFDS	RFDS
Dentist	•	•		•				•				
Hospital	•	•		•				•		•	•	•
Chemist	•	•	•	•				•				
Ambulance	•	•		•				•		•	•	
<b>SHOPPING</b>												
Post Office	•	•	•	•		•		•	•	•	•	•
ATM/EFTPOS	•	•	•	•	•			•	•	•	•	•
General Store	•	•	•	•		•		•	•	•	•	•
Variety of Stores	•	•		•				•				
National Retail Stores	•	•		•								
<b>GENERAL</b>												
Toilets	•	•	•	•	•	•	•	•	•	•	•	•
Police	•	•	•	•						•	•	
Mobile Phone*	•	•	•	•	•	•	•	•	•	•	•	•
Dump Site	•	•	•	•				•				

\* mobile phone coverage is based on Next G service



# Conargo Region

Pretty Pine, Wanganella, Booororban, Conargo, Blighty & Mayrung

The Conargo Region is the smallest Local Government Area (by population) in NSW and is made up of a number of small villages. Three of the villages, Pretty Pine, Wanganella and Booororban are located on The Long Paddock Cobb Highway Touring Route. The Conargo region is home to the famous Headless Horseman sculpture (located at the Black Swamp between Booororban and Wanganella). This is a must see photo stop for all visitors.



## Conargo at a glance

**Towns and Villages:** Pretty Pine, Wanganella, Booororban, Conargo, Blighty, Mayrung

**Population:** 1,800

**Main Industries:** Sheep, Cattle, Cereal Crops, Rice and Vitaculture

**Rivers:** The Billabong Creek and The Edward River

### Did you know?

Conargo is the only Local Government Region in Australia that does not have any poker machines.

### Events

**May -** Conargo Billabong Mothers Day Market

**September -** Pretty Pine Father Day Market

## Must See and Dos

- ✓ Make a farm visit to 'East Tolans' to learn more about local agriculture and be amazed at their sculptural garden.
- ✓ Check out the original Cobb & Co stables at The Royal Mail Hotel in Booororban.
- ✓ Discover the legend of The Headless Horseman at The Black Swamp and check out the sculptural installation.
- ✓ Visit some of the best bird watching areas in Australia, home to the rare Plains Wanderer.
- ✓ Taste wine at Clancy's of Conargo and take a winery tour.



**Conargo Shire**

End Street, Deniliquin NSW 2710

**Phone:** 03 5880 1200

**Website:** [www.conargo.nsw.gov.au](http://www.conargo.nsw.gov.au)

## Pretty Pine

Pretty Pine was one of the last changing stations for the famous Cobb & Co coaches on the Hay - Deniliquin run. Today a hotel remains which continues to serve refreshments and meals to passing travellers.

## History

There were no set distance between Cobb & Co's coach changing stations and the stops depended largely on the availability of water. The Deniliquin-Moama run had four changes: Hill Plain, Mathoura, Moira and the Yellow Water Hole (between Moama and Moira).

On the Hay run of 78 miles, horses were changed at intervals varying between 12 and 17 miles. Changing stations were at 12 mile Stables (Pretty Pine), Wanganella, Black Swamp, Booroorban and the 16 Mile Gums (view the interpretive panels at each of these locations).

Most of the inns have disappeared, though in their places there are now townships, which had their beginnings as resting places for coaches and their passengers.

Back in the 19th century this was frontier country and your life was not safe even in sleepy little spots like Pretty Pine. In 1883 an itinerant hawker, George Myzon, was bashed to death and robbed while he slept, just across the road from the Carriers' Arms Hotel. His alleged killer, Joseph Cordene, was arrested at Mathoura several days later. Found guilty, he was the last man hanged at Deniliquin.

## Attractions

Today the Pretty Pine Hotel is a great example of country hospitality. Take a few minutes to visit the Pretty Pine Recreation Hall the site for the famous Father's Day markets.

## Wanganella

Wanganella's claim to fame is the introduction to the world of the famous Australian Peppin Merino, which was developed on neighbouring land by the Peppin family in the 19th century.

## History

Situated on the banks of Billabong Creek, said to be the longest 'creek' in Australia, the village of Wanganella once boasted two hotels, two blacksmiths, two stores, a school, a church, a bootmaker, a resident police officer and a small lock-up (which is now located at the Peppin Heritage Centre in Deniliquin). A number of houses, mostly the homes of workers on Wanganella and other local stations, lined the streets. Sport was catered for with tennis courts, a cricket ground and race track.

The last surviving licensed hotel was destroyed by fire in 1957 and today the village consists of a general store, a community hall with adjoining playground, and a few houses and other buildings. It remains however, an interesting reminder of a bygone era.

George Hall Peppin and his two sons were experienced English sheep breeders who bought part of Wanganella Run (now Wanganella Station) in 1858. Dissatisfied with the yield and quality of wool from the sheep then available, they channelled their efforts into breeding a strain that was better adapted to Australian conditions, larger of frame and able to yield a greatly improved quality and quantity of wool.





Their successes constitute the foundation of Australia's reputation as a quality wool exporter. The Peppin strain of merino sheep now predominates in Australian wool producing flocks and has been exported to other parts of the world.

In recognition of the contribution made by the Peppin merino to Australia, a bronze statue of a ram has been mounted on a stone base near the entrance to Wanganella Station, just south of the village.

In 1878 the Peppin lands and stock were bought by F.S. Falkiner & Sons. This famous firm continued to acquire land and became one of the major landholders in the Riverina. At one stage the properties were owned by media magnate Rupert Murdoch. With its base at 'Boonoke', on the Deniliquin-Conargo road, the collective group of properties is now owned by the Bell Group.

The concrete bridge over the Billabong Creek at the edge of the village was constructed in 1970, replacing a timber structure situated a short distance upstream.

## Attractions

The Wanganella General Store welcomes visitors to the area and provides an ideal location for a break. Throw a line in the Billabong Creek or rest for a while in the park beside the community hall and check out the adjacent Long Paddock interpretive panel.

## Booroorban

Situated in the middle of the Old Man Plain beneath some well-established peppercorn trees, the remarkable Royal Mail Hotel constitutes the historical, social, physical and even genealogical centre of the small community of Booroorban.

The Royal Mail Hotel was built by Samuel Porter in 1868 and remained in the Porter family until 1910. The hotel was extensively refurbished in the 1980 and 1990's but the character and charm of the building has been retained.

Even in the early days of The Long Paddock they had the equivalent of drive-through dining – although it was a little more hard work then than it is today. Sam Porter from the Royal Mail Hotel at Booroorban used to ride his horse out to the Black Swamp to meet the north-bound coach, take orders for meals, baths, beds etc and then race back to the hotel to ensure everything was in readiness for the passengers' arrival. Sam always had the brick floor watered and swept and made sure the passengers were made welcome.

The Royal Mail Hotel remains the hub of social life on the Old Man Plain although there was some concern by the local community when the licence was sold off prior the Sydney Olympics and a lengthy struggle took place before another licence could be obtained.

## History

Originally known as Pine Ridge, Booroorban's origins are tied to the Royal Mail Hotel, which was a staging post on the Cobb & Co run between Hay and Deniliquin. It is the last remaining coaching inn on that route. Passengers disembarked to refresh themselves while the horses were exchanged for a fresh team kept in the stables, still intact, at the rear of the hotel.

The village of Booroorban was proclaimed in 1885. In its hey-day it consisted of two hotels, a wine house, school, post office, hall, general store, 20 houses and a population of 200.

The hotel's Headless Horseman Bar, with its painting of the subject, is named after a legend associated with the area. Drovers around the Black Swamp in the middle of the 19th century told of a horseman who appeared suddenly at a campsite, mounted on a trotting cob, a cloak about his shoulders but with no head, spooking the animals and causing stampedes. It was said to be the ghost of a drover who died at the swamp. Today the legend is forever captured in the sculpture of the Headless Horseman located at the Black Swamp rest area.

## Attractions

The area surrounding the hotel comprises two tennis courts and check out a grassed barbeque area overlooking a small lake and a playground. A caravan park is situated at the rear of the hotel. Nearby is a cemetery and a cricket ground and community hall.

The Conargo region is also home to the villages of Conargo, Blighty and Mayrung. These villages are rich in history and friendly country service. Stop in at the famous Conargo Hotel (1853) and wayside gardens with its picnic and barbecue facilities. It is one of several friendly country pubs in the area.



## Accommodation

### Wanganella Creek Camp Park

Come & stay on the Billabong creek at Wanganella enjoy the natural scenery & bird life or maybe catch a fish, we have modern amenities and camp kitchen also powered sites.

**Contact:** Lex & Annette Gardam  
**Phone:** 03 5882 3509

**Address:** Cobb Highway, Wanganella  
**Mobile:** 0419 502 594  
**Email:** lex.annie.wccp@hotmail.com



## Shops / Services

### Wanganella Store

Enjoy the friendly atmosphere of the Wanganella Store, meals, pizza and takeaways available 7 days a week. Post Office, Fuel, Groceries, gifts, drinks and ice creams, ice and fishing licenses also available.

**Contact:** Sonja Lefebure

**Address:** Cobb Highway, Wanganella  
**Phone:** 03 5884 7540  
**Fax:** 03 5884 7540



## Accommodation

### Royal Mail Hotel - Booroorban

Friendly country hospitality, cold beer, meals, take away, ice creams, ice, truck parking, motor home and caravan facilities, groups most welcome.

**Hosts:** Mandy and Roger Trist  
**UHF:** 19

**Address:** Cobb Highway, Booroorban  
**Phone / Fax:** 02 6993 0694  
**Email:** mandytrist@y7mail.com



## Shops / Services

### Conargo Junction Store

We have take away food, cappuccino, petrol, swap & go gas, ice, groceries, post office, souvenirs and also truck parking. Open 7 Days.

**Contact:** Faye & Kim Usher

**Address:** Jerilderie Road, Conargo, NSW 2710  
**Phone / Fax:** 03 5884 6605  
**Email:** usherk@broadnet.com.au



## Accommodation

### Elmsleigh Farm Stay & Eco-Tours

A photographer's, bird enthusiast's and nature lover's paradise adjacent the Long Paddock. Come and see the famous Plains Wanderer

**Phone / Fax:** 02 6993 0661  
**Email:** elmsley@tpg.com.au

**Contact:** Mary-Anne Butcher  
**Mobile:** 0429 930 661  
**Website:** www.users.tpg.com.au/elmsley/page5





# Hay Region

Hay, One Tree, Booligal, Maude & Oxley

Situated on the picturesque Murrumbidgee River and surrounded by the vast, open grasslands of the One Tree Plains, Hay's history is rich with characters and tales of boom and bust - of isolation and innovation.



## Hay Region at a glance

**Towns & Villages:** Hay, One Tree, Booligal, Maude & Oxley

**Population:** 3,500

**Main Industries:** Horticulture, Sheep, Cattle, Cereal Crops, Rice and Tourism

**River:** The Murrumbidgee

**National Parks:** Yanga, Booligal Station, Oolambeyan and Kalyarr

### Did you know?

Banjo Patterson wrote the famous "Hay, Hell and Booligal" after visiting the region.

It is said that the Hay Plains are the flattest place in the southern hemisphere.

### Events

**January -** Australia Day Celebrations

**February -** Annual Fishing Competition  
Carrathool Races

**May -** Hay Sheep Show

**September -** Hay Show

**October -** Hay Rodeo  
Booligal Sheep Races  
Bishop's Lodge Spring Market

**November -** Hay Races

## Must See and Dos

- ✓ Sunset on the vast Hay plain. And on a clear night, this is the perfect place to star-gaze.
- ✓ Visit Shear Outback for tall tales and true about the Australian shearing industry.
- ✓ Discover grand Bishop's Lodge historic house and garden.
- ✓ Learn about the chequered history of the Hay Gaol, built in 1878.
- ✓ Explore The Long Paddock Sculptural Trail at Bushy Bend.
- ✓ A visit to the memorial for Refugees and POWs. Learn more about the subject at the Dunera Museum at Hay Railway Station - Hay Internment & POW Camps Interpretive Centre at the old railway station.



**Hay Visitor Information Centre**

407 Moppett Street, Hay NSW 2711

**Phone:** 02 6993 4045

**Website:** [www.visithay.com.au](http://www.visithay.com.au)

## Hay

Over centuries poets and artists have attempted to capture the spirit of the plains, but only a visit to Hay will give visitors the real experience - the unique landscape, the diversity of attractions, the richness of our cultural heritage and the warmth of true country hospitality.

Hay's political and social history has left a grand legacy of Australian architecture. Hay's heritage buildings reveal the ingenuity of early architects attempting to tame a harsh outback climate. Hay services a large pastoral area so you'll find the main street buzzing with activity.

## History

The township of Hay began as Lang's Crossing, a crossing-place on the Murrumbidgee River for stock being driven south to markets in Victoria during the gold-rushes of the 1850s. The site was eventually surveyed in 1859 and Hay, named after a prominent politician (John Hay) of the day, quickly developed as an important hub for the surrounding pastoral holdings, with their fat-stock and wool production.

During its earliest days Hay's economy was linked to the navigation by steam-boats of the Murrumbidgee, and it became an important river port. The town and district was also extensively serviced by horse and bullock wagons. In 1882 the railway was extended to Hay, linking the town directly with regions to the east, including Sydney.

## Attractions

The Murrumbidgee River is where Hay started. Today the river provides some of the best fishing spots in NSW, as well as easy access for boating and canoeing. Hay's population makes full use of its 327 'fine days' a year and has a full calendar of special events covering the entire district.

For all the details on what to see and do in Hay visit the friendly local staff at the Hay Visitor Information Centre located in Moppett Street.

The Hay region is home to five amazing museums that are a must see for any visitor:

**Shear Outback** - Offers visitor a glimpse into the Australian shearing industry. The award winning museum captures the feel of the shearing shed in a modern interpretation. There are daily shearing demonstrations, a café, maze and retail shop.

**Bishop's Lodge Historic House** - Is a fine example of architectural adaptation. Visit the 1888 iron house to see how the building was made to withstand the heat of Hay's summers. Take a stroll through the historic gardens which contain many unique and heritage roses.

**Hay Gaol Museum** - Was built in 1878 and has been everything from an institute for girls to a maternity hospital. The gaol has many unique and rare treasures housed within its walls and provides a very moving experience for visitors.

**Hay War Memorial High School Museum** - This is a museum within a school - honoring the young that Hay lost in war by educating future generations. The museum houses a collection of artefacts, photographs and documents relating to both district war service across the twentieth century and the school itself.

**Dunera Museum - Hay Internment and POW Camps Interpretive Centre** - The flatness of the Hay Plains and the fact that it was the end of the rail line made it a perfect place to intern prisoners of war during World War Two. Hay became home to the famous Dunera boys, 2,000 German/Austrian Jewish internees first, followed by POWs from North Africa, Italy and Japan. No visit to Hay is complete without a walk through the Museum located at the Railway Building at the northern end of town.





## One Tree Hotel

Located between Hay and Booligal is the famous and historic One Tree Hotel. The hotel was built in 1862 by Alexander Finch. Originally known as Finch Inn, it was renamed the One Tree Hotel later when purchased by William Clark. It was named because of its location under one large gum tree growing on the clay pan near a fresh water well. One Tree was a staging post for the Cobb & Co Coach. The One Tree Hotel now stands on the plains, a stark reminder of an era gone by.

## Booligal

Located on the banks of the Lachlan River, the town consists of a pub, primary school, two churches, a cricket ground and play area. The pub supplies groceries, fuel, gas refills and is also an Australia Post agency. There are two BBQs available at the cricket ground - a great place to cook up your catch from the river. The Booligal Cricket Ground is the site of the famous annual Booligal Sheep Races.

## History

Booligal, was first sighted by explorer John Oxley on his journey down the Lachlan River. Its name, derived from the aboriginal language, means 'windy place'.

In the 1890's Booligal had a population of 500. Today the township itself has a floating population of approximately 28, but the community it serves extends to include properties within a 60+km radius.



## Attractions

Booligal is a one hour trip from Hay by bitumen road across the great open plains of saltbush, where wedge-tail eagles and galahs soar and kangaroos and emus roam at will. The road is flanked by a stock route on which drovers are a common sight, grazing their mobs of sheep or cattle along the "long paddock."

In the distance you can catch glimpses of the groups of trees marking the position of the station homesteads and their outlying buildings, the only relief to the curved line of the horizon.

## Maude and Oxley

While you are in the region take a couple of hours or a day to visit the villages of Maude and Oxley. Maude is located on the Murrumbidgee River west of Hay, it has a pub, caravan park and general store and is a good spot to throw a line in while enjoying a quite beer.

Oxley is a small village north west of Hay on the banks of the Lachlan River. St Barnabas Church is a fine example of a classic bush church and is well worth a look. From Oxley you can head to Mungo National Park.



## Accommodation

**Nicholas Royal Motel**

Hay's most centrally located 3.5 star motel. Relax in quiet surrounds with comfortable, affordable accommodation. Metres from highly awarded Jolly Jumbuck Bistro, cafes, shops, banks, council and government offices.

16 ground floor premium rooms offer: Wireless internet, Austar / LCD TV's, meals to rooms, queen or king size beds, microwaves, reverse-cycle A/C and ceiling fans, free BBQ & saltwater pool, great children's playground, large vehicle parking available, carwash and special seniors/rep's rates

**Address:** 152 Lachlan Street, Hay NSW 2711  
**Phone:** 1800 333 563 **Fax:** 02 6993 1737  
**Email:** info@nicholasroyalmotel.com.au  
**Website:** www.nicholasroyalmotel.com.au



## Accommodation

**Hay Plains Holiday Park**

A great spot to relax under a shady tree, catch up on the washing or cool off in the pool. You will find clean comfortable facilities and a friendly welcome.

- |                   |                               |
|-------------------|-------------------------------|
| ✓ Camp kitchen    | ✓ Powered and unpowered sites |
| ✓ Recreation room | ✓ Padded and unpadded sites   |
| ✓ Ensuite sites   | ✓ Swimming pool               |
| ✓ Air Con Cabins  | ✓ Adventure playground        |

Groups welcome.

**Address:** 4 Nailor Street, Hay NSW 2711  
**Phone:** 02 6993 1875 **Email:** office@haybig4.com.au

## Accommodation

**Riverina Hotel & Jolly Jumbuck Bistro**

- Central Location
- TAB and Sky Channel
- Gaming Machines
- Clean Budget Accommodation
- Friendly Service

Budget accommodation, all rooms recently refurbished. Enjoy a relaxed dining experience and country hospitality at the Jolly Jumbuck Bistro.

The Bistro boasts an extensive menu selection and an outstanding selection of wines.

Open everyday for lunch 12pm to 2pm and

**Address:** 148 Lachlan Street, Hay NSW 2711  
**Phone:** 02 6993 1137  
**Bistro Phone:** 02 6993 4718  
**Fax:** 02 6993 2131

## Accommodation

**The New Crown Hotel Motel**

The New Crown Hotel Motel originally opened in the early 1900s and is one of the oldest in Hay, the hotel is situated in the centre of town on the Lachlan Street.

The New Crown Hotel Motel is proud to offer a great selection of home cooked meals in their family friendly restaurant or beer garden, with plenty of room for the kids to play. Enjoy lunch and dinner 7 days a week.

The New Crown Hotel Motel boasts a wide range of accommodation options catering for the family and business traveller with ensuites in most rooms.

**Address:** 177 Lachlan Street, Hay NSW 2711  
**Phone:** 02 6993 1600 **Email:** office@newcrownhotel.com.au  
**Website:** www.newcrownhotel.com





## Accommodation



### Hay Caravan Park

We offer a range of accommodation options from drive thru and ensuite sites to air conditioned self contained cabins. • Saltwater pool • Free gas BBQ • Kiosk • Dump point  
Pets welcome at Manager's discretion.

**Address:** Sturt Highway, Hay NSW 2711

**Phone:** 02 6993 1415

**Email:** info@haycp.com.au

**Fax:** 02 6993 1066



## Accommodation



### Comfort Inn Hay-Bishop's Lodge *(Opening late 2010)*

Fully licenced a-la-carte restaurant, conference facilities, salt water swimming pool, spa, tennis court, guest laundry, spa suites and large 2 bedroom family suites, Austar TV to all rooms, free wireless broadband for laptops. Coach and trailer parking available.

**Address:** 35 Moama Street, (Sturt Highway) Hay NSW 2711

**Email:** info@comfortinnhay.com.au

**Website:** www.comfortinnhay.com.au

## Accommodation



### Lakeside Bed & Breakfast

A hidden treasure....relax and unwind in your private self contained suite overlooking stunning gardens and our fish filled lake. Enjoy a scrumptious country breakfast from your fully stocked pantry.

Pet friendly accommodation (by arrangement)

**Address:** "Riverton" Boon Street, Hay NSW 2711

**Email:** haylsbb@tpg.com.au

**Phone:** 02 6993 2203

**Mobile:** 0428 665 235

## Accommodation



### Booligal Hotel

Visit the outback right on your doorstep! Everything from Petrol, groceries, ice cream, drinks, meals, accommodation and Post Office.

Open 7 days

**Hosts:** Debbie, John & Damien

**Phone:** 02 6993 8123

**Email:** jd.robinson1@bigpond.com

**Address:** Cobb Highway Booligal

**Fax:** 02 6993 8177

## Attractions



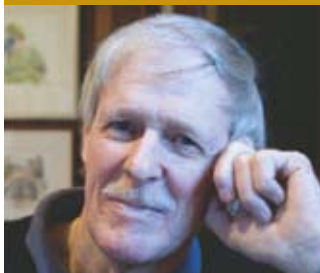
### Historic One Tree Hotel

Take yourself back in time to the old Cobb & Co staging post of the One Tree Hotel made famous by Banjo Patterson's poem, 'Hay, Hell and Booligal'. The building stands alone against the skyline, some 38kms from Hay as a reminder of the days of squatter's runs and stage coaches. Open by appointment only

**Phone:** 02 6993 1730

**Email:** tsk@tpg.com.au

## Attractions



### Chris McClelland Gallery

Chris is internationally recognised for his fine detailed graphite and coloured pencil drawings, which reflects his natural unique gift. He has a strong passion for the wildlife of Africa and Australia. His artwork captures movement of the wildlife with extraordinary precision that his animals appear alive. Our gallery is open most days except Sunday or by appointment.

**Address:** 84 Lachlan Street, Hay NSW 2711

**Phone:** 02 6993 4264

**Mobile:** 0427 873 122

**Email:** wildprints@bigpond.com

**Web:** www.wildprints.com.au

## Attractions

**Hay Bowling & Golf Club**

Best Beer in Town and Best Meals in Town. Chinese and Australian meals, great lunch specials, eat in or take away. Club Keno and ATM facilities, AUSTAR big screen. Two top class bowling greens. Australia's best sand green golf course. Promotions and raffles every Friday and Saturday nights. Social bowls Tuesday and Thursday afternoons. Bingo Monday afternoon. Great, friendly atmosphere.

**Address:** Corner Lachlan & Murray Streets, Hay NSW 2711

**Club Phone:** 02 6993 1360

**Bistro Phone:** 02 6993 2211

**Golf Course Phone:** 02 6993 1244

## Attractions

**Hay Services Club**

*For the information of members and guests.*

- Fully licenced Bistro-Dining room
- Open Thursday to Monday Lunch & Dinner and takeaways
- Keno, Bowls, Squash
- Riverina Superdraw Thursday nights
- ATM, Raffles every Thursday and Friday
- BINGO – Tuesday 1pm and Thursday 11am
- Courtesy bus
- Function room and auditorium for meetings and conferences

**Address:** 371 Murray Street, Hay NSW 2711

**Phone:** 02 6993 1206 **Fax:** 02 6993 1735

**Restaurant Phone:** 02 6993 4823

**Email:** hayservicesclub@exemail.com.au

**Shear Outback**

Australian Shearers Hall of Fame. Great cafe and retail shop, disabled facilities. Open 9am to 5pm every day. Shearing demonstrations at 10.30am, 1pm & 3.30pm.

**Phone:** 02 6993 4000

**Email:** info@shearoutback.com.au

# Hay's

## 5 AMAZING MUSEUMS

**Hay Gaol**

Disabled access, toilets, car and coach parking. Open daily 9am to 5pm for self guided tours. Group guided tours by prior arrangement. Located on Church Street.

**Phone:** 02 6993 1003

**Email:** jenijapp@bigpond.com

**Bishop's Lodge**

Situated in South Hay on the corner of the Sturt Highway and Roset St, one kilometre east of the main Hay roundabout. Open Monday to Saturday 2pm to 4.30pm.

**Phone:** 02 6993 1727

**Email:** bishopslodge@westnet.com.au

**Dunera Museum: 'About Hay 1940-46'**

POW Camps for 6,000 Italians, Japanese, + Located in air con carriages at the Hay Railway Station, Murray St. Open daily 9am -

**Phone:** 02 6993 2161

**Email:** houstondgcl@bigpond.com

**Hay War Memorial High School**

Open weekdays 9am to 4pm during school terms. Main building of school in Pine Street. Disabled access, toilets, car and coach parking. Groups by appointment.

**Phone:** 02 6993 1408

**Email:** haywarmem-h.school@det.nsw.edu.au

**HAY VISITOR INFORMATION CENTRE - 407 Moppett Street, Phone: 1300 307 090 Website: [www.hay.nsw.gov.au](http://www.hay.nsw.gov.au)**



## Shops / Services



### Havachat Coffee Shop

Sit, relax and let the friendly staff at Havachat serve you the finest coffee, tea and treats.

**Open 7 days a week:** Monday to Friday 9am – 4:30pm  
Saturday & Sunday 9am – 1:30pm

**Address:** 125 Lachlan Street, Hay NSW 2711  
**Phone / Fax:** 02 6993 3200

## Shops / Services



### TheLongPad-

### The Long Paddock Cafe

Enjoy the warmth of country hospitality as you dine in or take away. Homemade delights bringing you the taste of the outback. Yummy burgers, quiches, lasagne also vegetarian and gluten free meals along with toasted sandwiches, cakes, slices, hot & cold drinks, Vittoria Coffee with a lovely atmosphere.

**Address:** 131 Lachlan Street, Hay NSW 2711  
**Phone / Fax:** 02 6993 1128

## Shops / Services



### Hay Officesmart Newsagency (Newspower)

Daily newspapers (Melbourne / Sydney & Regional). Wide selection of magazines, souvenirs, postcards, books, greeting cards, stationery & touring guides. NSW lotteries agency, photocopying & phonecards prepaid mobile phones (Telstra, Optus & Vodafone) Internet/email, Fax services, drinks & confectionery, Darrell Lea chocolates outlet, photo express. Open 7 Days.

**Address:** 142 Lachlan Street, Hay NSW 2711  
**Email:** haynews@bigpond.com  
**Phone:** 02 6993 1081  
**Fax:** 02 6993 3255

## Attractions



### Hay Visitor Information Centre

The Hay Visitor Information Centre is centrally located in Moppett Street Hay just off the Main Street.

The Centre offers free local and regional maps & brochures on accommodation, attractions, events, dining out and other places of interest within the Riverina and NSW Outback.

Experience a friendly country welcome from the Centre staff who can offer information and advice on the "must sees in Hay".

We invite you to browse through the range of souvenirs, homemade jams, sauces and condiments, polo and rugby shirts, caps, wine coolers and stubby holders.

**Address:** 407 Moppett Street, Hay NSW 2711  
**Phone:** 02 6993 4045 **Fax:** 02 6993 2069  
**Email:** hayvic@hay.nsw.gov.au  
**Website:** www.hay.nsw.gov.au

## Shops / Services



### Robertson's Hot Bread Kitchen

When in Hay make sure you drop into our shop and tempt your tastebuds with our freshly baked breads, pies and scrumptious cakes.

Enjoy breakfast, lunch or a snack from 5am – 6 days per week. Grab a takeaway, or sit down and relax in our indoor or alfresco dining areas.

There is even a play area for children.

Coaches and large groups welcome.

Customer satisfaction is our policy.

**Owners:** Tim & Jenny Robertson  
**Address:** 149 Lachlan Street, Hay NSW 2711  
**Phone:** 02 6993 1130 **Fax:** 02 6993 4681  
**Email:** jenny@robertsonshotbread.com.au  
**Web:** robertsonshotbread.com.au

## NSW National Parks on the Long Paddock



The Long Paddock is the perfect place to step off and explore a NSW National Park.

The area is surrounded by some of the best National Parks in the state, all just a short drive from the touring route.

National Parks give you the chance to experience our breathtaking landscapes, fascinating historic and cultural heritage, and unique flora and fauna.

Whether it is a visit for a day or a week, these natural treasures offer a true outback experience. The region's National Parks offer everything from camping, hiking and mountain bike riding to bird watching and just plain relaxing. Immerse yourself in the region's rich pastoral heritage at Yanga and Willandra or discover an ancient land and people at Mungo.

**For more information visit** [www.nationalparks.nsw.gov.au](http://www.nationalparks.nsw.gov.au)

**Mungo, Kinchega,  
Paroo-Darling, Willandra,  
Yanga and Oolambeyan**



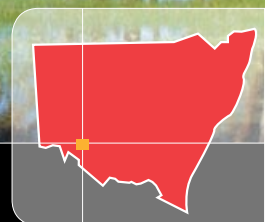
Environment,  
Climate Change  
& Water



NSW National Parks  
and Wildlife Service

**Yanga**

**NATIONAL PARK**



Connect with the unique natural and cultural heritage of **Yanga National Park**.

***Discover the fascinating chapters of our natural, pastoral and Aboriginal heritage with a visit to Yanga, one of our newest national parks.***

Picnic with the family, or unwind for a week and enjoy a choice of settings complemented by smart new visitor facilities.

Nestled along the 170 kilometres of Murrumbidgee River frontage are campgrounds, bushwalks and plenty of spots to wet the fishing line.

View the historic 1860's drop log homestead – once the centrepiece of the original Yanga Station, and the massive 130-metre long, century-old woolshed. 3,000 sheep at a time once sheltered here while river boats docked nearby to await their valuable cargo of wool.

Today the ancient river red gum forests combine with riverine wetland areas to provide habitat for an array of wildlife, including many endangered species and over 150 species of birds.

On Yanga, the natural world intertwines with significant Aboriginal Heritage, including canoe and scar trees, middens and oven mounds.

Yanga National Park is located 8 kilometres east of Balranald in western NSW, with easy access from the Sturt Highway.

[www.nationalparks.nsw.gov.au](http://www.nationalparks.nsw.gov.au)

**FIND YOURSELF**  
IN A NSW NATIONAL PARK



# Central Darling Region

Ivanhoe, Mossgiel, Wilcannia, Menindee, White Cliffs and Tilpa

The Central Darling Region covers the largest area of any local government area in NSW with over 53,000 square kilometres. Although it has a small population the region is renowned for its hospitality and its amazing array of fauna and flora. The region is the gateway to Mungo National Park, Broken Hill and Outback NSW.



## Central Darling Region at a glance

**Towns and Villages:** Ivanhoe, Mossgiel, Wilcannia, Menindee, White Cliffs and Tilpa

**Population:** 2,000

**Main Industries:** Sheep, Cattle, Horticulture, Mining and Tourism

**River:** The Darling

**National Parks:** Mungo, Paroo Darling and Willandra

### Did you know?

Australia's first commercial opal field was established at White Cliffs in 1894

### Events

**April -** White Cliffs Gymkhana and Rodeo  
**June -** Ivanhoe Campdraft  
**August -** Ivanhoe Quick Shear  
**October -** Kilfera Field Days (Ivanhoe)

## Must See and Dos

- ✓ Discover the Sandstone Architecture in Wilcannia (post office and its attached residence, the Athenaeum Library (1883) and the impressive courthouse (1880), police station (1881), and the police residence (1880).
- ✓ Visit the traditional craftsmen in Wilcannia.
- ✓ Learn about the history of Ivanhoe - follow the Heritage Trail and check out the mural 'The Pioneers'.
- ✓ Revel in the landscape at any one of a number of National Parks in the region.
- ✓ Spend the quietest, darkest night of your life underground at a Bed and Breakfast or motel at White Cliffs.



### Central Darling Shire

Reid Street, Wilcannia NSW 2836

**Phone:** 08 8083 8910

**Website:** [www.centraldarling.nsw.gov.au](http://www.centraldarling.nsw.gov.au)

## Ivanhoe

Born through hard work and determination, Ivanhoe represents the classic outback pastoral town. Through tough times and good, flood and crippling drought, towns like Ivanhoe have earned their place in Australia's history.

## History

Ivanhoe was originally situated on a well-used route across western New South Wales between Wilcannia and both Balranald and Booligal. George Williamson purchased the first land in the area between 1869 and 1873 and became a central figure in the town's development. He established a branch store with a liquor licence in 1870. At that stage the store and a bark hut constituted the town. The Ivanhoe Hotel came into existence by 1872 and a Post Office opened on January 1, 1874.

Williamson probably named the town after Sir Walter Scott's novel 'Ivanhoe'. Williamson was a Scot and there were a number of his countrymen in the area. They looked to their country of origin (and its most famous novelist) for other local place names - Mossgiel, Glenro, Waverley (another novel by Scott) and Abbotsford (Scott's birthplace).

A telegraph station opened in 1883, by which time there were about 50 residents, a blacksmith's shop, two hotels, two stores, the telegraph office and a few cottages. By 1884, the town was a horse changing station for Cobb & Co. A police station opened the following year and a school in 1889. Ivanhoe was proclaimed a village in 1890. The arrival of the railway in 1925, and the completion of the rail link from Sydney to Broken Hill in 1927, was a definite boost to the town.

## Attractions

A good introduction to the town can be had by following the eight signposted locations on the Ivanhoe Heritage Trail.



## Wilcannia

When you spend a few minutes taking in the historic buildings around Wilcannia you can quickly imagine the rich and vibrant history of this town. Once known as the 'Queen City of the West', Wilcannia was one of the busiest inland ports and third largest port in Australia. During the 1880s boom years, sandstone was quarried to create the beautiful buildings that today remain as a reminder of that prosperous era.

## History

Australia has been inhabited by the aboriginal people for some 40,000 years. Lake Mungo to the south of Wilcannia and Mootwingi to the north-west give evidence of their long occupation. Because of this, the Aboriginal people have a unique place in our Australian society. The Central Darling area around Wilcannia was held by the Barkindji tribe, and many of the Aboriginal people living in Wilcannia today belong to that tribe. In 1835, Major Thomas Mitchell followed the Bogan and Darling rivers down to Menindee, during which trip he named Mt Murchison (later to become Wilcannia) on the Darling. Settlement along the river commenced prior to 1850, but it was 1855 before the Central Darling runs were consolidated.





Captain Francis Cadell's steamer 'Albury' entered the Darling at Wentworth on 27 January 1859 and reached Mt Murchison in eight days. The township of Wilcannia was notified on 26 June 1866. In 1880 it had a population of 3000 with 13 hotels and was known as 'the Queen City of the West'. Wilcannia became one of the major ports of the Murray Darling system. The paddle steamer trade flourished for 70 years. At the port of Wilcannia in 1887, 218 steamers and their barges unloaded stores weighing 36,170 tons, and 222 loaded wool and other produce weighing 26,552 tons.

In 1890, there were 90 steamers plying the Darling and at one time there were 30 steamers loading or unloading at Wilcannia. Eventually rail and road transport killed the river boats and Wilcannia lost much of its former glory. However, many fine buildings from its early days remain in good condition, making Wilcannia one of the best preserved historic towns in Australia.

## Attractions

There are several fine traditional craftsmen and your visit may be an opportunity to purchase some of their arts and crafts. Wander around town and take in the magnificent sandstone buildings, centre lift bridge and old wharf.



## White Cliffs

White Cliffs is a small mining town of 320 people located just 95km north of Wilcannia. This truly unique underground town is a must see for those who want to see the outback at its best. Stay underground to get a feeling of what it is like to be a local or wander around the unusual landscape – you might just find a gem.

## Menindee

Menindee was the first town settled on the Darling River and is a mecca for bird watchers (there are more bird species here than in Kakadu NT). The area is known as the food bowl of the far west and produces citrus, orchards, stone fruit, grapes and vegetables. Stop and have a drink at the second oldest pub in NSW, the Maidens before visiting the famous Menindee Lakes. Bourke and Wills stayed here during their exploration of inland Australia.

## Tilpa

For a true Outback experience you have to visit the Tilpa Pub on the Darling River. This 100-year old attraction, made from corrugated iron and timber has walls covered with the autographs, dry wit, and messages from the hundreds of people who stop there each year. For a small fee you can pen a message or poem too.

The fishing is also good - with plenty of Murray Cod on offer - while birds make their home around the riverbanks.



# Central Darling Shire - Services

## **MENINDEE Accommodation**

**Albemarle Hotel**  
Menindee St. Ph: 08 8091 4162

**Maidens Hotel**  
59 Yartla St. Ph: 08 8091 4208

**Burke and Wills Motel**  
Yartla St. Ph: 08 8091 4406

**Menindee Bridge Caravan Park**  
Wentworth Rd. Ph: 08 8091 4282

**Menindee Lakes Caravan Park**  
Shore Rd. Ph: 08 8091 4315

**Copi Hollow Caravan Park**  
Copi Hollow via Mendinee  
Ph: 08 8091 4880

**Bindara Station on the Darling**  
Tandou- Bindara Rd via Menindee  
Ph: 08 8091 7412

**Idle View Holiday Cabin**  
Sunset Strip via Menindee  
Ph: 0428 881 437

## **Meals**

**Redsands Takeaway**  
Ph: 08 8091 4444

**Maidens Hotel**  
Yartla St. Ph: 08 8091 4208

**Albemarle Hotel**  
Menindee St. Ph: 08 8091 4212

## **Groceries, Fuel and other Services**

**Coombes Service Station**  
Perry St. Ph: 08 8091 4297

**Menindee Auto Repairs**  
Yartla St. Ph: 08 8091 4458

**Darling River Supermarket**  
Yartla St. Ph: 08 8091 4288

**Nations Roadside Produce Stall**  
Wentworth Ivanhoe Road  
Ph: 08 8091 4215

## **WILCANNIA Accommodation**

**Grahams Motel**  
Woore St. Ph: 08 8091 5040

**Wilcannia Motel**  
Barrier H'way Ph: 08 8091 5802

**Club Hotel**  
Barrier H'way Ph: 08 8091 5884

**Victory Park Caravan Park**  
Barrier H'way Ph: 08 8091 5600

## **Meals**

**Wilcannia Roadhouse**  
Myer St. Ph: 08 8091 5957

**Wilcannia Golf Club**  
Ross St. Ph: 08 8091 5943

## **Groceries, Fuel and other Services**

**Wilcannia Auto Repairs**  
Ph: 08 8091 5969

**Wilcannia Roadhouse**  
Myer St. Ph: 08 8091 5957

**BP Wilcannia**  
Reid St. Ph: 08 8091 5021

## **WHITE CLIFFS Accommodation and Meals**

(\* meals provided, bookings  
essential)

**Opal Pioneer Tourist Park**  
Ph: 08 8091 6688

**White Cliffs Underground Motel**  
Ph: 08 8091 6677 (\*)

**PJ's Underground B & B**  
Ph: 08 8091 6626 (\*)

**White Cliffs Hotel Motel**  
Ph: 08 8091 6606 (\*)

## **Groceries, Fuel and other Services**

**White Cliffs Store and Visitor  
Information Centre**  
Ph: 08 8091 6611

## **IVANHOE Accommodation**

**Ivanhoe Hotel**  
Ph: 02 6995 1102

**Gypsum Palace Inn**  
Ph: 02 6995 1389

**Ivanhoe Service Station (cabins)**  
Ph: 02 6995 1277

## **Meals**

**Ivanhoe RSL**  
Ph: 02 6995 1208

**Presso Café**  
Ph: 02 6995 1292

## **Groceries, Fuel and other services**

**Starpoint Grocery**  
Ph: 02 6995 1206

**Danson's Gypsy Auto Port**  
Ph: 02 6995 1389

**Ivanhoe Service Station**  
Ph: 02 6995 1277

## **TILPA Accommodation and Meals**

**Royal Hotel**  
Ph: 02 6837 3928

**Killara Station**  
Ph: 02 6837 3964





# Put yourself in the Picture



Outback NSW offers some of the best Outback experiences in the country. If you like open skies, vivid colours, freedom and silence, the Outback experience is for you.

Base yourself in any of our country towns or follow a couple of our suggested touring routes to experience many homely and unique places that have its mark in history. Learn about the early Indigenous cultures and the influence of European settlers in Outback Australia, as well as the impact of the agriculture and mining industries.

The way of life in the Outback is uncomplicated and when visitors return home, their outlook on life has changed for the better.

Link any of our touring routes across the region to experience some of the best landscapes Australia has to offer.

**For all you need to know about planning your next trip go to our website [www.visitoutback.com](http://www.visitoutback.com)**

[www.visitoutback.com](http://www.visitoutback.com)



## Outback Beds

*'stay in the outback with friends'*

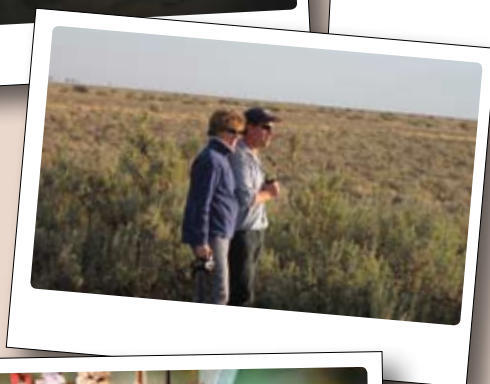


RING US FOR  
YOUR FREE  
OUTBACK MAP

Staying with the Outback Beds network allows you to experience working sheep and cattle stations, bush pubs, heritage indulgence, B&B's, tranquil river campsites, family farmstays, underground living, shearers' quarters ..... even camel campouts. You'll find a great place to stay in a place you'll never forget.

Telephone: 1 800 005 298 [www.outbackbeds.com.au](http://www.outbackbeds.com.au)





**Wilcannia**

**White Cliffs** 94

**Wentworth** 488 395

**Wanganella** 396 567 473

**Wagga Wagga** 307 583 753 659

**Sydney** 470 763 1039 1052 958

**Swan Hill** 909 470 763 1039 595 502

**Renmark** 361 1137 689 511 148 636 542

**Pretty Pine** 483 172 743 287 27 368 587 493

**Mildura** 340 125 218 1012 564 369 35 520 427

**Melbourne** 538 358 657 339 876 739 369 571 935 823

**Mathoura** 273 379 66 521 181 788 333 76 407 643 549

**Longreach** 1696 1957 1845 2007 1726 1743 1690 1620 1642 1204 1258

**Ivanhoe** 1532 368 614 386 311 528 320 799 478 291 414 276 182

**Hay** 208 1537 154 432 291 102 433 189 752 269 82 319 484 391

**Griffith** 159 258 263 464 439 251 582 338 575 191 231 467 534 440

**Echuca /** 303 193 407 1735 39 234 391 106 533 177 802 372 116 419 683 589

**Cobar** 532 607 365 408 403 1129 567 840 687 511 802 597 703 503 490 655 354 261

**Charleville** 614 1146 587 979 1022 514 1181 1443 1368 1124 1493 1211 1229 1176 1104 1138 689 743

**Canberra** 1197 624 539 360 510 647 1711 573 660 781 527 906 694 284 244 548 824 923 829

**Broken Hill** 1080 1069 457 638 526 317 1583 673 837 299 634 424 512 608 266 288 196

**Brisbane** 1540 1223 754 1089 1457 1531 1272 1371 1374 1186 1491 1658 1647 1445 1772 1560 957 722 1250 1453 1689 1314 1350

**Bourke** 924 615 743 454 160 693 767 526 568 968 727 989 877 671 1039 775 722 651 815 391 420

**Booroorban** 527 575 622 1071 457 74 149 198 258 1587 109 383 335 53 478 215 770 314 36 363 534 440

**Booligal** 123 527 424 622 981 237 313 222 72 131 1496 271 545 403 215 546 302 837 195 381 431 383 290

**Bendigo** 417 255 874 697 643 1328 713 180 106 392 305 513 1842 146 149 398 212 517 859 422 222 433 789 695

**Albury** 297 436 436 847 1375 866 346 918 636 204 246 272 323 532 1432 238 314 571 230 696 352 562 125 241 571 807 714

**Adelaide** 932 770 767 767 1129 2054 514 1153 1583 967 663 691 803 655 757 2097 695 723 372 680 247 514 1384 936 691 423 798 707

This guide was published with the support of:

Design and Print by: Specialty Press  
Total Print Solution. Phone: 02 6021 3366.



**Industry & Investment**

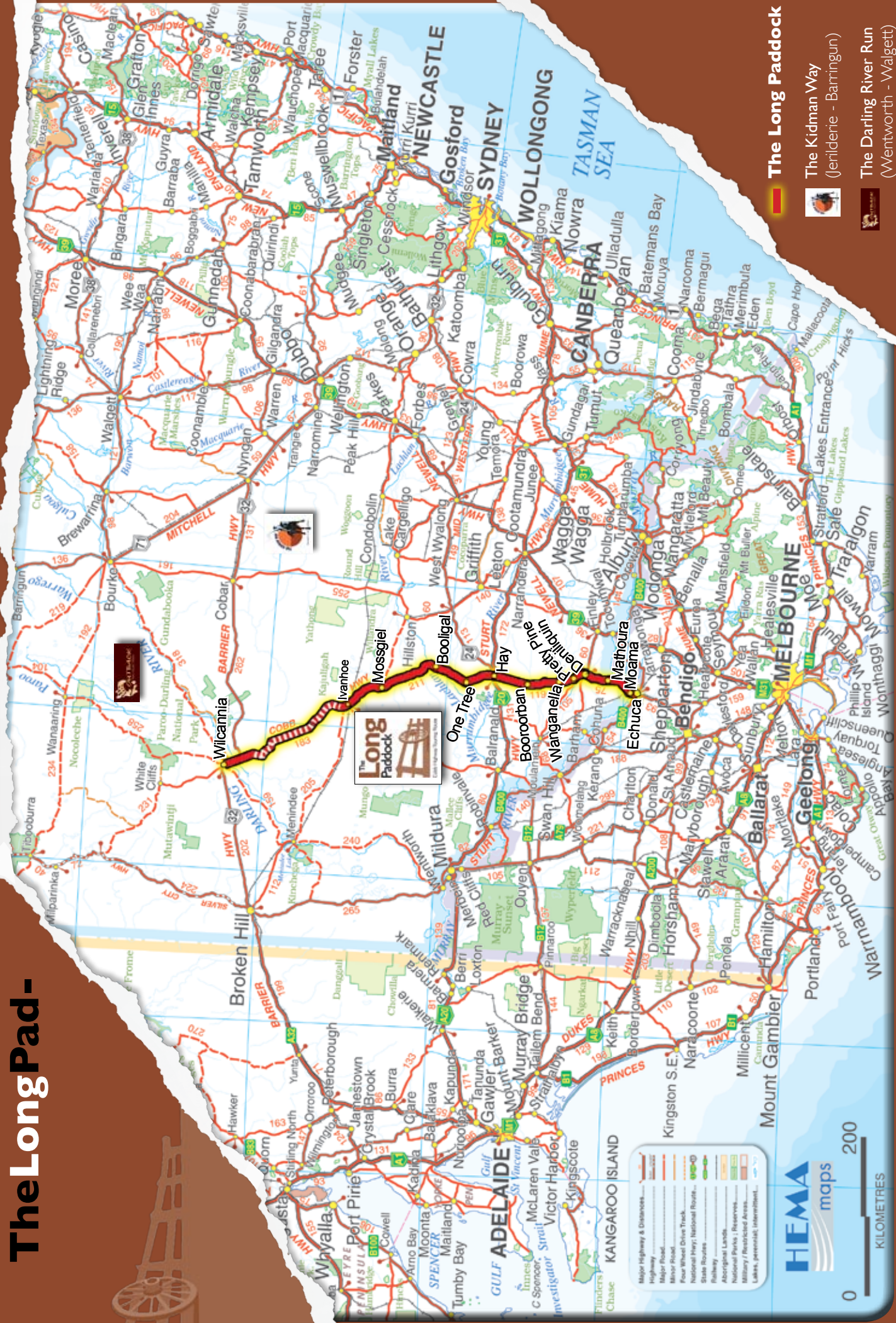


www.thelongpaddock.com.au

**DISTANCE GRID**



# The Long Pad-



# The Long Paddock

## The Kidman Way (Jerilderie - Barrington)

## The Darling River Run (Wentworth - Walgett)



200

KILOMETRES